

For Research Use Only

# SPAG8 Polyclonal antibody, PBS Only

Catalog Number: 13915-1-PBS



## Basic Information

Catalog Number:

13915-1-PBS

Concentration:

1 mg/ml

Source:

Rabbit

Isotype:

IgG

Immunogen Catalog Number:

AG4910

GenBank Accession Number:

BC019247

GeneID (NCBI):

26206

UNIPROT ID:

Q99932

Full Name:

sperm associated antigen 8

Calculated MW:

45 kDa, 54 kDa

Observed MW:

56-70 kDa

Purification Method:

Antigen affinity purification

## Applications

Tested Applications:

WB, IHC, IF/ICC, IP, Indirect ELISA

Species Specificity:

human, mouse, rat

## Background Information

SPAG8, also named as Sperm-associated antigen 8 or HSD-1, is a 426 amino acid protein, which is expressed in testis (germ cells), but not in liver, kidney, prostate and small intestine. SPAG8 may play a role in fertility and microtubule formation through interaction with RANBP9. SPAG8 as testis-specific protein is produced during male germ cell differentiation and functions in a germ cell type- and stage-specific manner during spermatogenesis.

## Storage

Storage:

Store at -80°C.

**The product is shipped with ice packs. Upon receipt, store it immediately at -80°C**

Storage Buffer:

PBS Only

For technical support and original validation data for this product please contact:

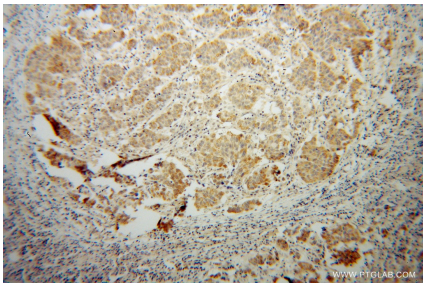
T: 4006900926

E: [Proteintech-CN@ptglab.com](mailto:Proteintech-CN@ptglab.com)

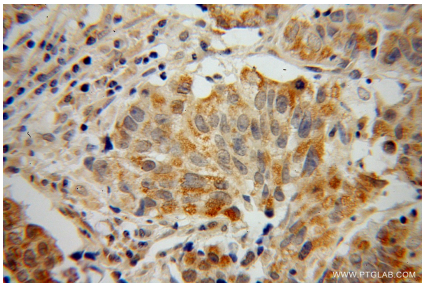
W: [ptgcn.com](http://ptgcn.com)

**This product is exclusively available under Proteintech Group brand and is not available to purchase from any other manufacturer.**

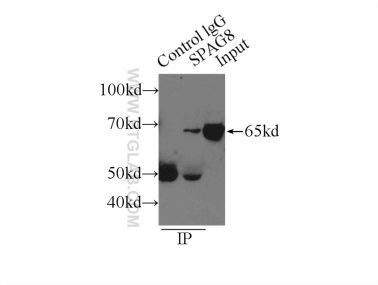
Selected Validation Data



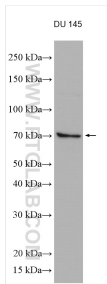
Immunohistochemical analysis of paraffin-embedded human prostate cancer using 13915-1-AP (SPAG8 antibody) at dilution of 1:100 (under 10x lens). This data was developed using the same antibody clone with 13915-1-PBS in a different storage buffer formulation.



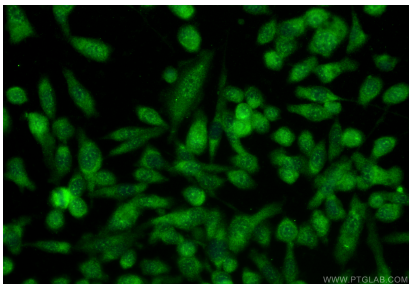
Immunohistochemical analysis of paraffin-embedded human prostate cancer using 13915-1-AP (SPAG8 antibody) at dilution of 1:100 (under 40x lens). This data was developed using the same antibody clone with 13915-1-PBS in a different storage buffer formulation.



IP result of anti-SPAG8 (IP:13915-1-AP, 3ug; Detection:13915-1-AP 1:500) with mouse testis tissue lysate 6000ug. This data was developed using the same antibody clone with 13915-1-PBS in a different storage buffer formulation.



DU 145 cells lysates were subjected to SDS PAGE followed by western blot with 13915-1-AP (SPAG8 antibody) at dilution of 1:600 incubated at room temperature for 1.5 hours. This data was developed using the same antibody clone with 13915-1-PBS in a different storage buffer formulation.



Immunofluorescent analysis of (-20°C Ethanol) fixed PC-3 cells using SPAG8 antibody (13915-1-AP) at dilution of 1:400 and CoraLite® 488-Conjugated Goat Anti-Rabbit IgG(H+L) (SA00013-2). This data was developed using the same antibody clone with 13915-1-PBS in a different storage buffer formulation.