

For Research Use Only

# KLHDC3 Polyclonal antibody

Catalog Number: 13905-1-AP

2 Publications



## Basic Information

Catalog Number: 13905-1-AP	GenBank Accession Number: BC041793	Purification Method: Antigen affinity purification
Size: 400 ug/ml	GeneID (NCBI): 116138	Recommended Dilutions: IHC 1:50-1:500
Source: Rabbit	UNIPROT ID: Q9BQ90	IF/ICC 1:200-1:800
Isotype: IgG	Full Name: kelch domain containing 3	
Immunogen Catalog Number: AG4879	Calculated MW: 382 aa, 43 kDa	

## Applications

Tested Applications: IHC, IF/ICC, ELISA	Positive Controls:
Cited Applications: WB	IHC : mouse testis tissue, human testis tissue
Species Specificity: human, mouse	IF/ICC : PC-3 cells,
Cited Species: human	
<b>Note-IHC: suggested antigen retrieval with TE buffer pH 9.0; (*) Alternatively, antigen retrieval may be performed with citrate buffer pH 6.0</b>	

## Background Information

The BTB (Broad-Complex, Tramtrack and Bric a brac) domain, also known as the POZ (Poxvirus and Zinc finger) domain, is an N-terminal homodimerization domain that contains multiple copies of kelch repeats and/or C2H2-type zinc fingers. Proteins that contain BTB domains are thought to be involved in transcriptional regulation via control of chromatin structure and function. The Kelch domain-containing protein 3 (KLHDC3), also designated PEAS, contains 5 Kelch repeats and may be involved in meiotic recombination process. The gene encoding KLHDC3 maps to chromosome 6, which contains around 1,200 genes within 170 million base pairs of sequence. Deletion of a portion of the q arm of chromosome 6 is associated with early onset intestinal cancer suggesting the presence of a cancer susceptibility locus. Porphyrria cutanea tarda, Parkinson's disease, Stickler syndrome, 21-hydroxylase deficiency and maple syrup urine disease are also associated with genes on chromosome 6. KLHDC3 protein is mainly expressed in cytoplasm, also found in meiotic chromatin.

## Notable Publications

Author	Pubmed ID	Journal	Application
Magda Wąchalaska	38442151	Proc Natl Acad Sci U S A	WB
Magda Wąchalaska	37808699	bioRxiv	WB

## Storage

**Storage:**  
Store at -20°C. Stable for one year after shipment.  
**Storage Buffer:**  
PBS with 0.02% sodium azide and 50% glycerol pH 7.3.  
**Aliquoting is unnecessary for -20°C storage**

For technical support and original validation data for this product please contact:

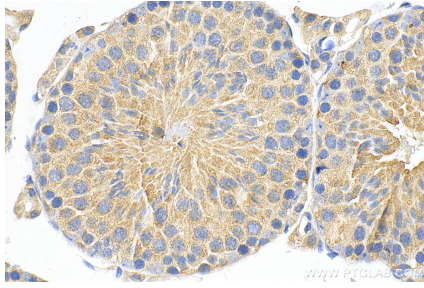
T: 4006900926

E: [Proteintech-CN@ptglab.com](mailto:Proteintech-CN@ptglab.com)

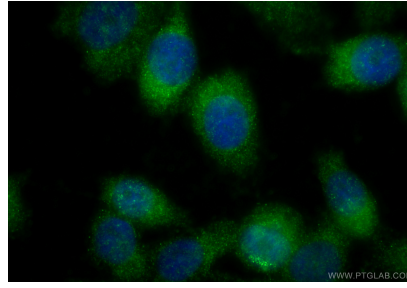
W: [ptgcn.com](http://ptgcn.com)

**This product is exclusively available under Proteintech Group brand and is not available to purchase from any other manufacturer.**

## Selected Validation Data



Immunohistochemical analysis of paraffin-embedded mouse testis tissue slide using 13905-1-AP (KLHDC3 antibody) at dilution of 1:200 (under 40x lens). Heat mediated antigen retrieval with Tris-EDTA buffer (pH 9.0).



Immunofluorescent analysis of (-20°C Ethanol) fixed PC-3 cells using KLHDC3 antibody (13905-1-AP) at dilution of 1:400 and Multi-rAb CoraLite® Plus 488-Goat Anti-Rabbit Recombinant Secondary Antibody (H+L) (RGAR002).