

For Research Use Only

# RABGAP1L Polyclonal antibody

Catalog Number: 13894-1-AP

Featured Product

4 Publications



## Basic Information

### Catalog Number:

13894-1-AP

### Size:

500 µg/ml

### Source:

Rabbit

### Isotype:

IgG

### Immunogen Catalog Number:

AG4856

### GenBank Accession Number:

BC041888

### GeneID (NCBI):

9910

### UNIPROT ID:

Q5R372

### Full Name:

RAB GTPase activating protein 1-like

### Calculated MW:

815 aa, 93 kDa

### Observed MW:

93-105 kDa

### Purification Method:

Antigen affinity purification

### Recommended Dilutions:

WB 1:500-1:2000

IP 0.5-4.0 µg for 1.0-3.0 mg of total protein lysate

IHC 1:20-1:200

IF/ICC 1:10-1:100

## Applications

### Tested Applications:

WB, IHC, IF/ICC, IP, ELISA

### Cited Applications:

WB, IHC, IF

### Species Specificity:

human, mouse, rat

### Cited Species:

human, mouse, rat

**Note-IHC: suggested antigen retrieval with TE buffer pH 9.0; (\*) Alternatively, antigen retrieval may be performed with citrate buffer pH 6.0**

### Positive Controls:

WB : HeLa cells, MCF-7 cells

IP : HeLa cells,

IHC : human hepatocirrhosis tissue, human placenta tissue

IF/ICC : HeLa cells,

## Background Information

RABGAP1L, also known as TBC1D18, is a member of the Tre2/Bub2/Cdc16 (TBC)-domain-containing protein family. Overexpression of RABGAP1L potentiated the antiviral action of IFN against a panel of viruses, including IAV, and its function required a catalytically active TBC domain.

## Notable Publications

Author	Pubmed ID	Journal	Application
Shu Hiragi	36197338	J Cell Biol	WB
Emily Golden	33772001	Nat Commun	IHC
Sonja Fembach	35320721	Cell Rep	WB,IF

## Storage

### Storage:

Store at -20°C. Stable for one year after shipment.

### Storage Buffer:

PBS with 0.02% sodium azide and 50% glycerol pH 7.3.

Aliquoting is unnecessary for -20°C storage

For technical support and original validation data for this product please contact:

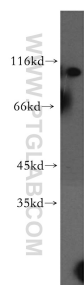
T: 4006900926

E: [Proteintech-CN@ptglab.com](mailto:Proteintech-CN@ptglab.com)

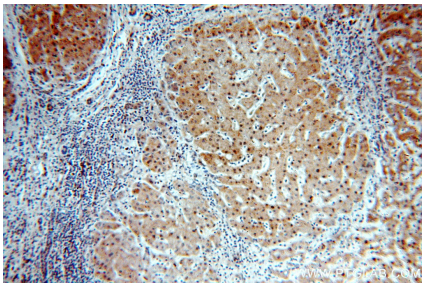
W: [ptgcn.com](http://ptgcn.com)

This product is exclusively available under Proteintech Group brand and is not available to purchase from any other manufacturer.

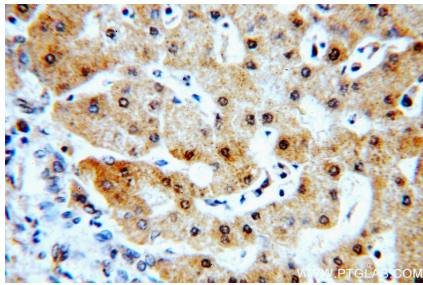
Selected Validation Data



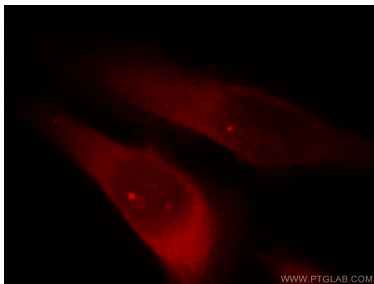
HeLa cells were subjected to SDS PAGE followed by western blot with 13894-1-AP (RABGAP1L antibody) at dilution of 1:1000 incubated at room temperature for 1.5 hours.



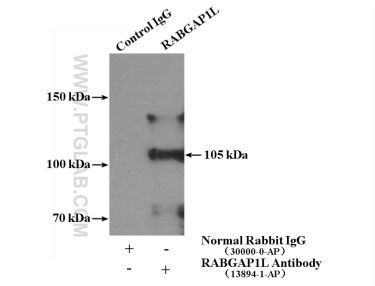
Immunohistochemical analysis of paraffin-embedded human hepatocirrhosis using 13894-1-AP (RABGAP1L antibody) at dilution of 1:100 (under 10x lens).



Immunohistochemical analysis of paraffin-embedded human hepatocirrhosis using 13894-1-AP (RABGAP1L antibody) at dilution of 1:100 (under 40x lens).



Immunofluorescent analysis of HeLa cells, using RABGAP1L antibody 13894-1-AP at 1:25 dilution and Rhodamine-labeled goat anti-rabbit IgG (red).



IP result of anti-RABGAP1L (IP:13894-1-AP, 4ug; Detection:13894-1-AP 1:1000) with HeLa cells lysate 3200ug.