

For Research Use Only

# DHH Polyclonal antibody

Catalog Number: 13889-1-AP

3 Publications



## Basic Information

Catalog Number:

13889-1-AP

Size:

450 µg/ml

Source:

Rabbit

Isotype:

IgG

Immunogen Catalog Number:

AG4850

GenBank Accession Number:

BC033507

GeneID (NCBI):

50846

UNIPROT ID:

O43323

Full Name:

desert hedgehog homolog  
(Drosophila)

Calculated MW:

396 aa, 44 kDa

Observed MW:

42 kDa

Purification Method:

Antigen affinity purification

Recommended Dilutions:

WB 1:500-1:2000

## Applications

Tested Applications:

WB, ELISA

Cited Applications:

WB, IHC, IF

Species Specificity:

human, mouse, rat

Cited Species:

human, rat

Positive Controls:

WB : mouse skeletal muscle tissue,

## Background Information

In mammals, the Hh family consists of three members: Sonic hedgehog (Shh), Indian hedgehog (Ihh), and Dhh. The secreted protein desert hedgehog (dhh) controls the formation of the nerve perineurium during development and is a key component of Schwann cells that ensures peripheral nerve survival. The Hedgehog (HH) signaling pathway is necessary for self-renewal and maintenance of mammary stem cells.

## Notable Publications

Author	Pubmed ID	Journal	Application
Zheng Zhang	36152995	Gene Expr Patterns	WB
Yasuteru Inoue	39100897	Front Cell Neurosci	IF
Yuki Fujisawa	37956599	Biochem Biophys Res Commun	IHC

## Storage

Storage:

Store at -20°C. Stable for one year after shipment.

Storage Buffer:

PBS with 0.02% sodium azide and 50% glycerol pH 7.3.

Aliquoting is unnecessary for -20°C storage

For technical support and original validation data for this product please contact:

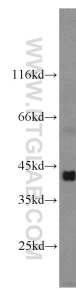
T: 4006900926

E: [Proteintech-CN@ptglab.com](mailto:Proteintech-CN@ptglab.com)

W: [ptgcn.com](http://ptgcn.com)

This product is exclusively available under Proteintech Group brand and is not available to purchase from any other manufacturer.

## Selected Validation Data



mouse skeletal muscle tissue were subjected to SDS PAGE followed by western blot with 13889-1-AP (DHH antibody) at dilution of 1:1000 incubated at room temperature for 1.5 hours.