

For Research Use Only

# NKCC1,SLC12A2 Polyclonal antibody



Catalog Number: 13884-1-AP

Featured Product

19 Publications

## Basic Information

**Catalog Number:**

13884-1-AP

**Size:**

700 µg/ml

**Source:**

Rabbit

**Isotype:**

IgG

**Immunogen Catalog Number:**

AG4991

**GenBank Accession Number:**

BC033003

**GeneID (NCBI):**

6558

**UNIPROT ID:**

P55011

**Full Name:**

solute carrier family 12  
(sodium/potassium/chloride  
transporters), member 2

**Calculated MW:**

131 kDa

**Observed MW:**

150-160 kDa

**Purification Method:**

Antigen affinity purification

**Recommended Dilutions:**

WB 1:1000-1:4000

IHC 1:50-1:500

## Applications

**Tested Applications:**

IHC, WB, ELISA

**Cited Applications:**

WB, IP, IF, IHC

**Species Specificity:**

human, mouse, rat

**Cited Species:**

human, rat, mouse, pig

**Positive Controls:**

**WB** : mouse brain tissue, 37°C incubated mouse brain tissue

**IHC** : human colon cancer tissue,

**Note-IHC: suggested antigen retrieval with TE buffer pH 9.0; (\*) Alternatively, antigen retrieval may be performed with citrate buffer pH 6.0**

## Background Information

The Na-K-Cl cotransporter sodium-potassium-chloride cotransporter 1 (NKCC1), encoded by the SLC12A2 gene, is an intensively studied member of the CCC family. NKCC1 is a membrane protein and plays fundamental roles in regulating trans-epithelial ion movement, cell volume, chloride homeostasis and neuronal excitability. NKCC1 assembles into a dimer, with the first ten transmembrane (TM) helices harboring the transport core and TM11-TM12 helices lining the dimer interface (PMID: 32081947). The observed molecular weight of NKCC1 is about 140 kDa, glycosylated NKCC1 is detected a band at 170 kDa (PMID: 22723696).

## Notable Publications

Author	Pubmed ID	Journal	Application
Bo Yang	26389591	PLoS One	WB
Michelle W Antoine	24009395	Science	WB,IHC
Jie Zhu	34626749	Neuroscience	WB

## Storage

**Storage:**

Store at -20°C. Stable for one year after shipment.

**Storage Buffer:**

PBS with 0.02% sodium azide and 50% glycerol pH 7.3.

Aliquoting is unnecessary for -20°C storage

For technical support and original validation data for this product please contact:

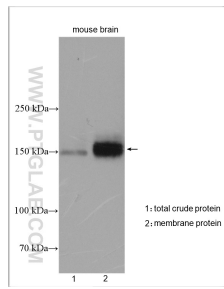
T: 4006900926

E: Proteintech-CN@ptglab.com

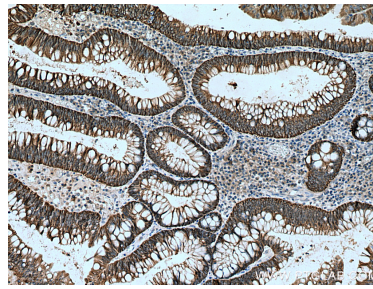
W: ptgcn.com

**This product is exclusively available under Proteintech Group brand and is not available to purchase from any other manufacturer.**

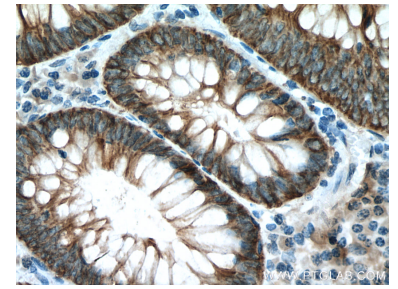
## Selected Validation Data



Mouse brain total extract lysate and 37°C incubated mouse brain membrane extract lysate were subjected to SDS PAGE followed by western blot with 13884-1-AP (NKCC1,SLC12A2 antibody) at dilution of 1:2000 incubated at room temperature for 1.5 hours.



Immunohistochemical analysis of paraffin-embedded human colon cancer tissue slide using 13884-1-AP (NKCC1 antibody) at dilution of 1:200 (under 10x lens). Heat mediated antigen retrieval with Tris-EDTA buffer (pH 9.0).



Immunohistochemical analysis of paraffin-embedded human colon cancer tissue slide using 13884-1-AP (NKCC1 antibody) at dilution of 1:200 (under 40x lens). Heat mediated antigen retrieval with Tris-EDTA buffer (pH 9.0).