

For Research Use Only

# FIG4 Polyclonal antibody

Catalog Number: 13875-1-AP



## Basic Information

Catalog Number:

13875-1-AP

Size:

190 µg/ml

Source:

Rabbit

Isotype:

IgG

Immunogen Catalog Number:

AG4929

GenBank Accession Number:

BC041338

GeneID (NCBI):

9896

UNIPROT ID:

Q92562

Full Name:

FIG4 homolog (S. cerevisiae)

Calculated MW:

907 aa, 104 kDa

Purification Method:

Antigen affinity purification

Recommended Dilutions:

IP 0.5-4.0 µg for 1.0-3.0 mg of total protein lysate

IHC 1:100-1:400

## Applications

Tested Applications:

IHC, IP, ELISA

Species Specificity:

human, mouse, rat

**Note-IHC: suggested antigen retrieval with TE buffer pH 9.0; (\*) Alternatively, antigen retrieval may be performed with citrate buffer pH 6.0**

Positive Controls:

IP: COS-7 cells,

IHC: human renal cell carcinoma tissue,

## Background Information

### Storage

Storage:

Store at -20°C. Stable for one year after shipment.

Storage Buffer:

PBS with 0.02% sodium azide and 50% glycerol pH 7.3.

Aliquoting is unnecessary for -20°C storage

For technical support and original validation data for this product please contact:

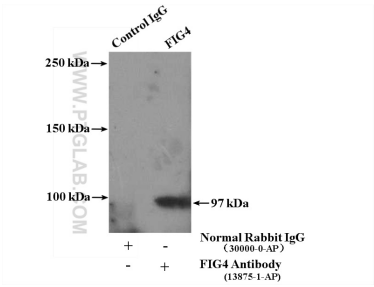
T: 4006900926

E: [Proteintech-CN@ptglab.com](mailto:Proteintech-CN@ptglab.com)

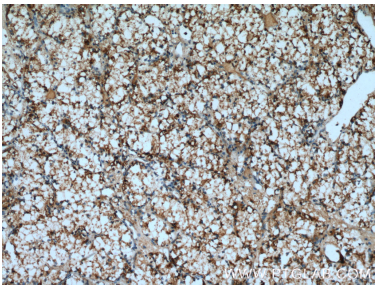
W: [ptgcn.com](http://ptgcn.com)

This product is exclusively available under Proteintech Group brand and is not available to purchase from any other manufacturer.

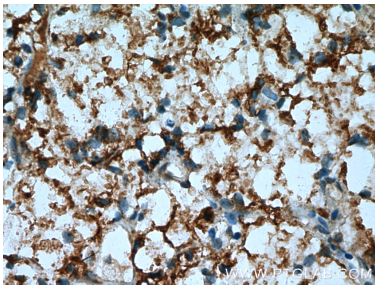
Selected Validation Data



IP result of anti-FIG4 (IP:13875-1-AP, 4ug; Detection:13875-1-AP 1:300) with COS-7 cells lysate 2400ug.



Immunohistochemical analysis of paraffin-embedded human renal cell carcinoma tissue slide using 13875-1-AP (FIG4 Antibody) at dilution of 1:200 (under 10x lens). Heat mediated antigen retrieval with Tris-EDTA buffer (pH 9.0).



Immunohistochemical analysis of paraffin-embedded human renal cell carcinoma tissue slide using 13875-1-AP (FIG4 Antibody) at dilution of 1:200 (under 40x lens). Heat mediated antigen retrieval with Tris-EDTA buffer (pH 9.0).