

For Research Use Only

KCNE1L Polyclonal antibody

Catalog Number: 13867-1-AP



Basic Information

Catalog Number:

13867-1-AP

Size:

350 µg/ml

Source:

Rabbit

Isotype:

IgG

Immunogen Catalog Number:

AG4849

GenBank Accession Number:

BC035330

GeneID (NCBI):

23630

UNIPROT ID:

Q9UJ90

Full Name:

KCNE1-like

Calculated MW:

142 aa, 15 kDa

Purification Method:

Antigen affinity purification

Recommended Dilutions:

IHC 1:50-1:500

Applications

Tested Applications:

IHC, ELISA

Species Specificity:

human, mouse, rat

Positive Controls:

IHC : human heart tissue,

Note-IHC: suggested antigen retrieval with TE buffer pH 9.0; (*) Alternatively, antigen retrieval may be performed with citrate buffer pH 6.0

Background Information

Storage

Storage:

Store at -20°C. Stable for one year after shipment.

Storage Buffer:

PBS with 0.02% sodium azide and 50% glycerol pH 7.3.

Aliquoting is unnecessary for -20°C storage

For technical support and original validation data for this product please contact:

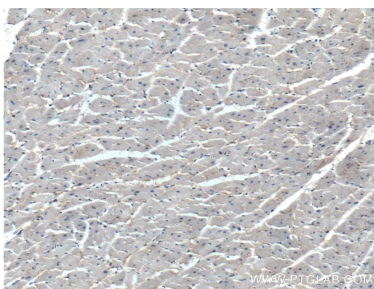
T: 4006900926

E: Proteintech-CN@ptglab.com

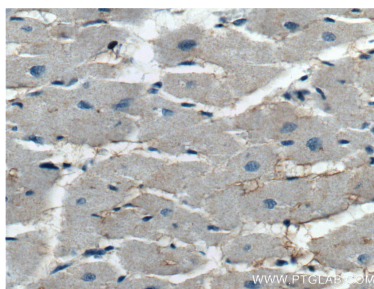
W: ptgcn.com

This product is exclusively available under Proteintech Group brand and is not available to purchase from any other manufacturer.

Selected Validation Data



Immunohistochemical analysis of paraffin-embedded human heart tissue slide using 13867-1-AP (KCNE1L Antibody) at dilution of 1:200 (under 10x lens).



Immunohistochemical analysis of paraffin-embedded human heart tissue slide using 13867-1-AP (KCNE1L Antibody) at dilution of 1:200 (under 40x lens).