

For Research Use Only

# DNAJC4 Polyclonal antibody

Catalog Number: 13853-1-AP



## Basic Information

<b>Catalog Number:</b> 13853-1-AP	<b>GenBank Accession Number:</b> BC044584	<b>Purification Method:</b> Antigen affinity purification
<b>Size:</b> 800 µg/ml	<b>GeneID (NCBI):</b> 3338	<b>Recommended Dilutions:</b> WB 1:500-1:1000 IHC 1:20-1:200
<b>Source:</b> Rabbit	<b>UNIPROT ID:</b> Q9NNZ3	
<b>Isotype:</b> IgG	<b>Full Name:</b> DnaJ (Hsp40) homolog, subfamily C, member 4	
<b>Immunogen Catalog Number:</b> AG4826	<b>Calculated MW:</b> 28 kDa	
	<b>Observed MW:</b> 28-30 kDa	

## Applications

### Tested Applications:

IHC, WB, ELISA

### Species Specificity:

human, mouse, rat

**Note-IHC: suggested antigen retrieval with TE buffer pH 9.0; (\*) Alternatively, antigen retrieval may be performed with citrate buffer pH 6.0**

### Positive Controls:

WB: MCF-7 cells, HeLa cells, HepG2 cells

IHC: human breast cancer tissue,

## Background Information

### Storage

#### Storage:

Store at -20°C. Stable for one year after shipment.

#### Storage Buffer:

PBS with 0.02% sodium azide and 50% glycerol pH 7.3.

Aliquoting is unnecessary for -20°C storage

For technical support and original validation data for this product please contact:

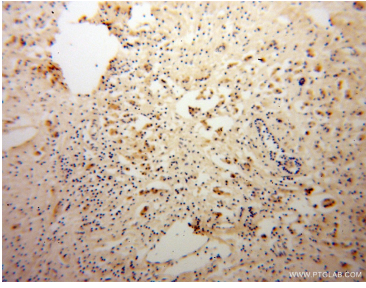
T: 4006900926

E: [Proteintech-CN@ptglab.com](mailto:Proteintech-CN@ptglab.com)

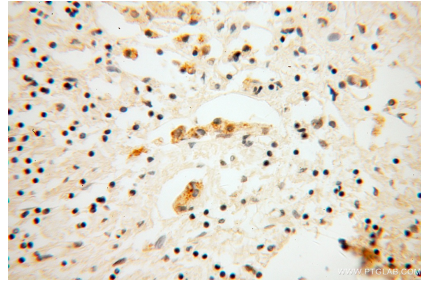
W: [ptgcn.com](http://ptgcn.com)

This product is exclusively available under Proteintech Group brand and is not available to purchase from any other manufacturer.

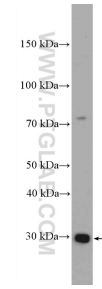
## Selected Validation Data



Immunohistochemical analysis of paraffin-embedded human breast cancer using 13853-1-AP (DNAJC4 antibody) at dilution of 1:100 (under 10x lens).



Immunohistochemical analysis of paraffin-embedded human breast cancer using 13853-1-AP (DNAJC4 antibody) at dilution of 1:100 (under 40x lens).



MCF-7 cells were subjected to SDS PAGE followed by western blot with 13853-1-AP (DNAJC4 Antibody) at dilution of 1:600 incubated at room temperature for 1.5 hours.