

For Research Use Only

SAP18 Polyclonal antibody

Catalog Number: 13841-1-AP

3 Publications



Basic Information

Catalog Number:

13841-1-AP

Size:

350 ug/ml

Source:

Rabbit

Isotype:

IgG

Immunogen Catalog Number:

AG4795

GenBank Accession Number:

BC030836

GeneID (NCBI):

10284

UNIPROT ID:

O00422

Full Name:

Sin3A-associated protein, 18kDa

Calculated MW:

153 aa, 18 kDa

Observed MW:

18 kDa

Purification Method:

Antigen affinity purification

Recommended Dilutions:

WB 1:500-1:1000

IP 0.5-4.0 ug for 1.0-3.0 mg of total protein lysate

IHC 1:20-1:200

IF/ICC 1:20-1:200

Applications

Tested Applications:

WB, IHC, IF/ICC, IP, ELISA

Cited Applications:

WB, IF, IP

Species Specificity:

human

Cited Species:

human, monkey

Positive Controls:

WB : K-562 cells,

IP : K-562 cells,

IHC : human cervical cancer tissue,

IF/ICC : Hela cells,

Note-IHC: suggested antigen retrieval with TE buffer pH 9.0; (*) Alternatively, antigen retrieval may be performed with citrate buffer pH 6.0

Background Information

SAP18 is part of the SIN3-repressing complex, which enhances the ability of SIN3-HDAC1-mediated transcriptional repression. When tethered to the promoter, it can direct the formation of a repressive complex to core histone proteins. Component of a splicing-dependent multiprotein exon junction complex (EJC) deposited at splice junction on mRNAs. The EJC is a dynamic structure consisting of a few core proteins and several more peripheral nuclear and cytoplasmic associated factors that join the complex only transiently either during EJC assembly or during subsequent mRNA metabolism

Notable Publications

Author	Pubmed ID	Journal	Application
Mio Iwasaki	35573189	iScience	WB
Kazuhiro Fukumura	39687031	iScience	WB
Naling Yang	38795403	Vet Microbiol	WB,IP,IF

Storage

Storage:

Store at -20°C. Stable for one year after shipment.

Storage Buffer:

PBS with 0.02% sodium azide and 50% glycerol pH 7.3.

Aliquoting is unnecessary for -20°C storage

For technical support and original validation data for this product please contact:

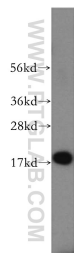
T: 4006900926

E: Proteintech-CN@ptglab.com

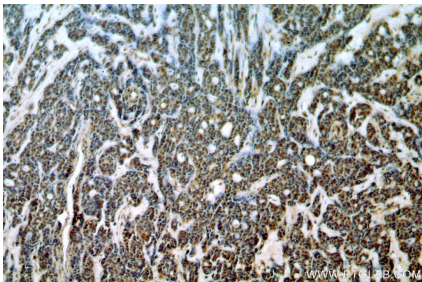
W: ptgcn.com

This product is exclusively available under Proteintech Group brand and is not available to purchase from any other manufacturer.

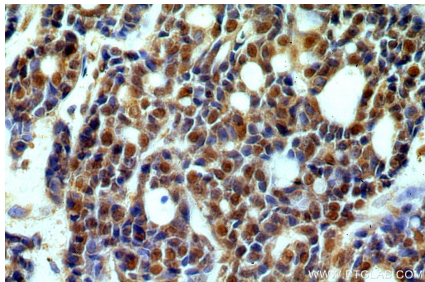
Selected Validation Data



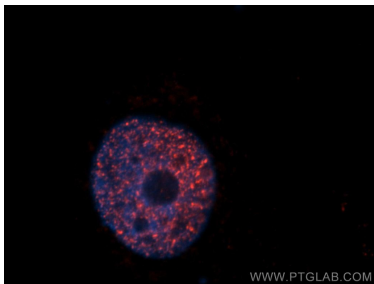
K-562 cells were subjected to SDS PAGE followed by western blot with 13841-1-AP (SAP18 antibody) at dilution of 1:500 incubated at room temperature for 1.5 hours.



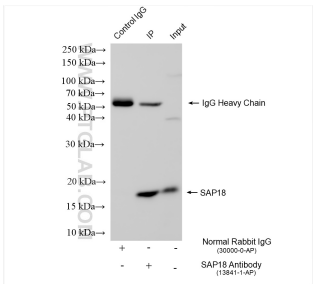
Immunohistochemical analysis of paraffin-embedded human cervical cancer using 13841-1-AP (SAP18 antibody) at dilution of 1:50 (under 10x lens).



Immunohistochemical analysis of paraffin-embedded human cervical cancer using 13841-1-AP (SAP18 antibody) at dilution of 1:50 (under 40x lens).



Immunofluorescent analysis of HeLa cells, using SAP18 antibody 13841-1-AP at 1:50 dilution and Rhodamine-labeled goat anti-rabbit IgG (red). Blue pseudocolor = DAPI (fluorescent DNA dye).



IP result of anti-SAP18 (IP:13841-1-AP, 4ug; Detection:13841-1-AP 1:800) with K-562 cells lysate 1600 ug.