

For Research Use Only

# Spartin/SPG20 Polyclonal antibody

Catalog Number: 13791-1-AP

Featured Product

15 Publications



## Basic Information

### Catalog Number:

13791-1-AP

### Concentration:

800 ug/ml

### Source:

Rabbit

### Isotype:

IgG

### Immunogen Catalog Number:

AG4815

### GenBank Accession Number:

BC047083

### GeneID (NCBI):

23111

### UNIPROT ID:

Q8NOX7

### Full Name:

spastic paraplegia 20 (Troyer syndrome)

### Calculated MW:

75 kDa, 85 kDa

### Observed MW:

75-84 kDa

### Purification Method:

Antigen affinity purification

### Recommended Dilutions:

WB 1:2000-1:10000

IP 0.5-4.0 ug for 1.0-3.0 mg of total protein lysate

IHC 1:400-1:1600

## Applications

### Tested Applications:

WB, IHC, FC (Intra), IP, ELISA

### Cited Applications:

WB, IHC, IF, IP

### Species Specificity:

human, mouse, rat

### Cited Species:

human, mouse

**Note-IHC: suggested antigen retrieval with TE buffer pH 9.0; (\*) Alternatively, antigen retrieval may be performed with citrate buffer pH 6.0**

### Positive Controls:

**WB** : HEK-293 cells, HeLa cells, NIH/3T3 cells

**IP** : HeLa cells,

**IHC** : human liver cancer tissue, human breast cancer tissue

## Background Information

SPG20 (spastic paraplegia 20) gene encodes a multifunctional Spartin protein. SPG20 protein is highly expressed in adipose tissue and may be implicated in endosomal trafficking and microtubule dynamics. SPG20 is mutated in Troyer syndrome, a hereditary spastic paraplegia defined by degeneration of upper motor neurons, recent study showed that regulation of SPG20 on mitochondrial calcium homeostasis may contribute to the pathophysiology of Troyer syndrome. Hypermethylation of SPG20 promoter, found in colorectal cancer patients, may play a role in cytokinesis arrest in colorectal tumorigenesis.

## Notable Publications

Author	Pubmed ID	Journal	Application
Lind G E GE	21499309	Oncogene	WB,IF
Urbanczyk Andreas A	21707618	J Neurochem	IHC,IF
Joshua M Nicholson	25942454	Elife	WB

## Storage

### Storage:

Store at -20°C. Stable for one year after shipment.

### Storage Buffer:

PBS with 0.02% sodium azide and 50% glycerol

Aliquoting is unnecessary for -20°C storage

For technical support and original validation data for this product please contact:

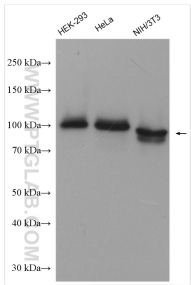
T: 4006900926

E: [Proteintech-CN@ptglab.com](mailto:Proteintech-CN@ptglab.com)

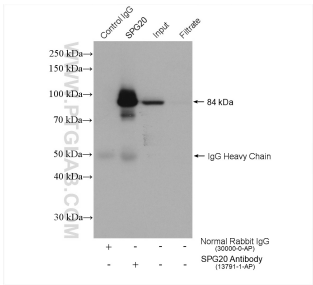
W: [ptgcn.com](http://ptgcn.com)

**This product is exclusively available under Proteintech Group brand and is not available to purchase from any other manufacturer.**

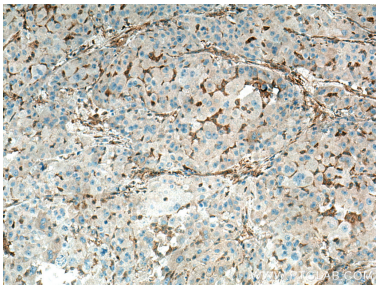
Selected Validation Data



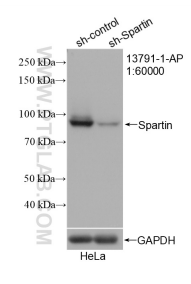
Various lysates were subjected to SDS PAGE followed by western blot with 13791-1-AP (Spartin, SPG20 antibody) at dilution of 1:5000 incubated at room temperature for 1.5 hours.



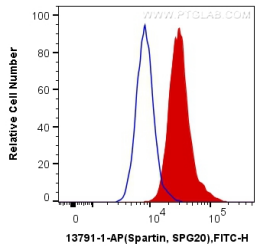
IP result of anti-Spartin, SPG20 (IP:13791-1-AP, 4ug; Detection:13791-1-AP 1:2000) with HeLa cells lysate 2320 ug.



Immunohistochemical analysis of paraffin-embedded human liver cancer tissue slide using 13791-1-AP (Spartin, SPG20 antibody) at dilution of 1:800 (under 10x lens). Heat mediated antigen retrieval with Tris-EDTA buffer (pH 9.0).



WB result of Spartin, SPG20 antibody (13791-1-AP; 1:60000; incubated at room temperature for 1.5 hours) with sh-Control and sh-Spartin, SPG20 transfected HeLa cells.



1X10<sup>6</sup> HepG2 cells were intracellularly stained with 0.2 ug Anti-Human Spartin, SPG20 (13791-1-AP) and CoraLite® 488-Conjugated AffiniPure Goat Anti-Rabbit IgG(H+L) at dilution 1:1000 (red), or 0.2 ug Control Antibody. Cells were fixed with 4% PFA and permeabilized with Flow Cytometry Perm Buffer (PF00011-C).