

For Research Use Only

PFKFB3 Polyclonal antibody

Catalog Number: 13763-1-AP

Featured Product

131 Publications



Basic Information

Catalog Number:

13763-1-AP

Concentration:

1000 µg/ml

Source:

Rabbit

Isotype:

IgG

Immunogen Catalog Number:

AG4744

GenBank Accession Number:

BC040482

GeneID (NCBI):

5209

UNIPROT ID:

Q16875

Full Name:

6-phosphofructo-2-kinase/fructose-2,6-bisphosphatase 3

Calculated MW:

520 aa, 60 kDa

Observed MW:

58 kDa

Purification Method:

Antigen affinity purification

Recommended Dilutions:

WB 1:1000-1:6000

IP 0.5-4.0 µg for 1.0-3.0 mg of total protein lysate

IHC 1:50-1:500

IF/ICC 1:50-1:500

Applications

Tested Applications:

WB, IHC, IF/ICC, IP, ELISA

Cited Applications:

WB, IHC, IF, IP, CoIP

Species Specificity:

human, mouse

Cited Species:

human, mouse, rat

Note-IHC: suggested antigen retrieval with TE buffer pH 9.0; (*) Alternatively, antigen retrieval may be performed with citrate buffer pH 6.0

Positive Controls:

WB: HEK-293 cells, mouse thymus tissue, mouse heart tissue, A431 cells, HeLa cells, Jurkat cells, mouse spleen tissue

IP: mouse spleen tissue,

IHC: human liver cancer tissue, human kidney tissue, human liver tissue

IF/ICC: HepG2 cells,

Background Information

PFKFB3, also named as NY-REN-56 and iPFK-2, plays a role in glucose metabolism. Its synthesis and degradation of fructose 2,6-bisphosphate. Endogenously generated adenosine cooperates with bacterial components to increase PFKFB3 isozyme activity, resulting in greater fructose 2,6-bisphosphate accumulation. PFKFB3 is required for increased growth, metabolic activity and is regulated through active JAK2 and STAT5.

Notable Publications

Author	Pubmed ID	Journal	Application
Nina M S Gustafsson	30250201	Nat Commun	WB, IF
Teresa W-M Fan	36150727	J Immunol	
Zhiping Liu	28928465	Nat Commun	

Storage

Storage:

Store at -20°C. Stable for one year after shipment.

Storage Buffer:

PBS with 0.02% sodium azide and 50% glycerol, pH7.3

Aliquoting is unnecessary for -20°C storage

For technical support and original validation data for this product please contact:

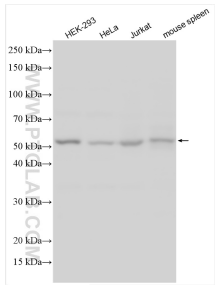
T: 4006900926

E: Proteintech-CN@ptglab.com

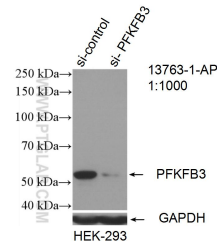
W: ptgcn.com

This product is exclusively available under Proteintech Group brand and is not available to purchase from any other manufacturer.

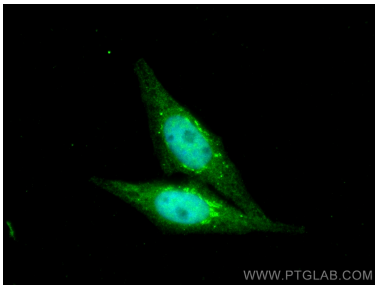
Selected Validation Data



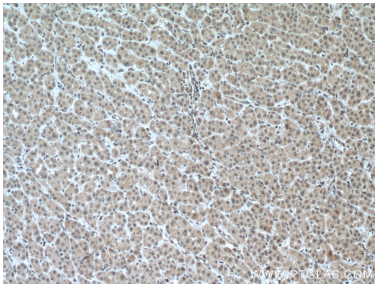
Various lysates were subjected to SDS PAGE followed by western blot with 13763-1-AP (PFKFB3-Specific antibody) at dilution of 1:3000 incubated at room temperature for 1.5 hours.



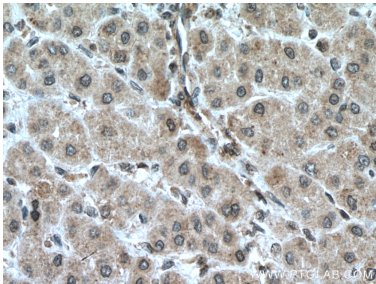
WB result of PFKFB3-Specific antibody (13763-1-AP; 1:1000; incubated at room temperature for 1.5 hours) with sh-Control and sh-PFKFB3-Specific transfected HEK-293 cells.



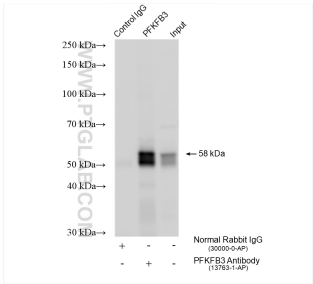
Immunofluorescent analysis of (4% PFA) fixed HepG2 cells using PFKFB3-Specific antibody (13763-1-AP) at dilution of 1:200 and CoraLite®488-Conjugated Goat Anti-Rabbit IgG(H+L).



Immunohistochemical analysis of paraffin-embedded human liver cancer tissue slide using 13763-1-AP (PFKFB3-Specific antibody) at dilution of 1:200 (under 10x lens. Heat mediated antigen retrieval with Tris-EDTA buffer (pH 9.0).



Immunohistochemical analysis of paraffin-embedded human liver cancer tissue slide using 13763-1-AP (PFKFB3-Specific antibody) at dilution of 1:200 (under 40x lens. Heat mediated antigen retrieval with Tris-EDTA buffer (pH 9.0).



IP result of anti-PFKFB3 (IP:13763-1-AP, 4ug; Detection:13763-1-AP 1:500) with mouse spleen tissue lysate 2440 ug.