

For Research Use Only

CRYBB1 Polyclonal antibody

Catalog Number: 13760-1-AP

1 Publications



Basic Information

Catalog Number:

13760-1-AP

Size:

300 µg/ml

Source:

Rabbit

Isotype:

IgG

Immunogen Catalog Number:

AG4722

GenBank Accession Number:

BC036790

GeneID (NCBI):

1414

UNIPROT ID:

P53674

Full Name:

crystallin, beta B1

Calculated MW:

252 aa, 28 kDa

Observed MW:

30 kDa

Purification Method:

Antigen affinity purification

Recommended Dilutions:

WB 1:200-1:500

Applications

Tested Applications:

WB, ELISA

Cited Applications:

WB

Species Specificity:

human

Cited Species:

rat

Positive Controls:

WB : MCF7 cells,

Background Information

Notable Publications

Author	Pubmed ID	Journal	Application
Jing Li	36705056	FASEB J	WB

Storage

Storage:

Store at -20°C. Stable for one year after shipment.

Storage Buffer:

PBS with 0.02% sodium azide and 50% glycerol pH 7.3.

Aliquoting is unnecessary for -20°C storage

For technical support and original validation data for this product please contact:

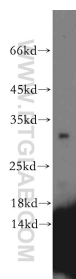
T: 4006900926

E: Proteintech-CN@ptglab.com

W: ptgcn.com

This product is exclusively available under Proteintech Group brand and is not available to purchase from any other manufacturer.

Selected Validation Data



MCF7 cells were subjected to SDS PAGE followed by western blot with 13760-1-AP (CRYBB1 antibody) at dilution of 1:100 incubated at room temperature for 1.5 hours.