

For Research Use Only

# MTG1 Polyclonal antibody

Catalog Number: 13742-1-AP

2 Publications



## Basic Information

Catalog Number:

13742-1-AP

Size:

300 µg/ml

Source:

Rabbit

Isotype:

IgG

Immunogen Catalog Number:

AG4681

GenBank Accession Number:

BC035721

GeneID (NCBI):

92170

UNIPROT ID:

Q9BT17

Full Name:

mitochondrial GTPase 1 homolog (S. cerevisiae)

Calculated MW:

300 aa, 33 kDa

Observed MW:

37 kDa

Purification Method:

Antigen affinity purification

Recommended Dilutions:

WB 1:1000-1:4000

IF/ICC 1:20-1:200

## Applications

Tested Applications:

WB, IF/ICC, ELISA

Cited Applications:

WB

Species Specificity:

human

Cited Species:

human

Positive Controls:

WB : human brain tissue, human liver tissue

IF/ICC : SH-SY5Y cells,

## Background Information

### Notable Publications

Author	Pubmed ID	Journal	Application
Elena Lavdovskaia	30085210	Nucleic Acids Res	WB
Liang Wang	37971521	Cell Mol Life Sci	WB

## Storage

Storage:

Store at -20°C. Stable for one year after shipment.

Storage Buffer:

PBS with 0.02% sodium azide and 50% glycerol pH 7.3.

Aliquoting is unnecessary for -20°C storage

For technical support and original validation data for this product please contact:

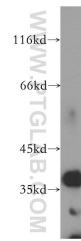
T: 4006900926

E: Proteintech-CN@ptglab.com

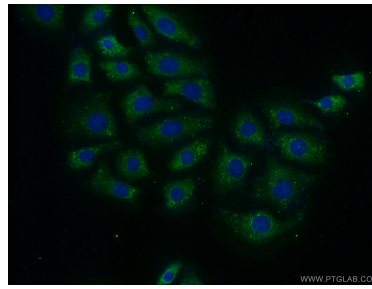
W: ptgcn.com

This product is exclusively available under Proteintech Group brand and is not available to purchase from any other manufacturer.

## Selected Validation Data



human brain tissue were subjected to SDS PAGE followed by western blot with 13742-1-AP (MTG1 antibody) at dilution of 1:300 incubated at room temperature for 1.5 hours.



Immunofluorescent analysis of (-20°C Ethanol) fixed SH-SY5Y cells using 13742-1-AP (MTG1 antibody) at dilution of 1:50 and Alexa Fluor 488-conjugated Goat Anti-Rabbit IgG(H+L).