

For Research Use Only

DUT Polyclonal antibody

Catalog Number: 13740-1-AP **3 Publications**



Basic Information

Catalog Number:

13740-1-AP

Size:

800 µg/ml

Source:

Rabbit

Isotype:

IgG

Immunogen Catalog Number:

AG4677

GenBank Accession Number:

BC033645

GeneID (NCBI):

1854

UNIPROT ID:

P33316

Full Name:

deoxyuridine triphosphatase

Calculated MW:

252 aa, 27 kDa

Observed MW:

23 kDa

Purification Method:

Antigen affinity purification

Recommended Dilutions:

WB 1:500-1:2000

IP 0.5-4.0 µg for 1.0-3.0 mg of total protein lysate

IHC 1:50-1:500

IF 1:20-1:200

Applications

Tested Applications:

IF/ICC, IHC, IP, WB, ELISA

Cited Applications:

WB, ColP

Species Specificity:

human

Cited Species:

human

Note-IHC: suggested antigen retrieval with TE buffer pH 9.0; (*) Alternatively, antigen retrieval may be performed with citrate buffer pH 6.0

Positive Controls:

WB: HeLa cells, human liver tissue, human kidney tissue, HEK-293 cells, Ramos cells, A549 cells, HepG2 cells

IP: HEK-293 cells,

IHC: human heart tissue,

IF: HEK-293 cells,

Background Information

Notable Publications

Author	Pubmed ID	Journal	Application
Debin Ji	29578692	Bioconjug Chem	WB
Yi-Ping Wang	33770508	Cell Metab	WB, ColP
Ying Yu Liang	34265272	Cell Chem Biol	WB

Storage

Storage:

Store at -20°C. Stable for one year after shipment.

Storage Buffer:

PBS with 0.02% sodium azide and 50% glycerol pH 7.3.

Aliquoting is unnecessary for -20°C storage

For technical support and original validation data for this product please contact:

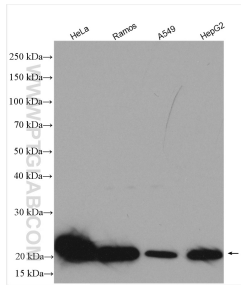
T: 4006900926

E: Proteintech-CN@ptglab.com

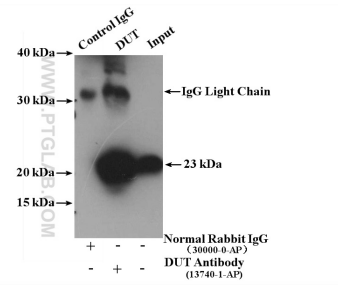
W: ptgcn.com

This product is exclusively available under Proteintech Group brand and is not available to purchase from any other manufacturer.

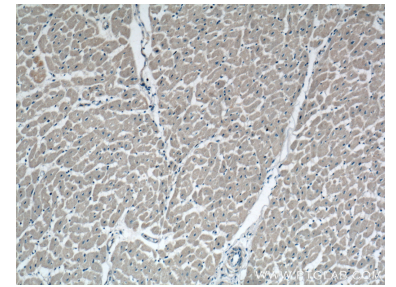
Selected Validation Data



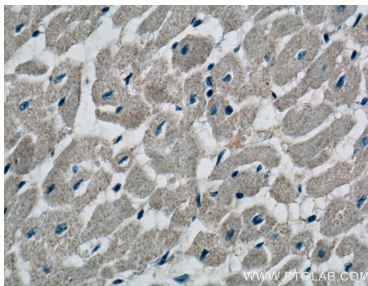
Various lysates were subjected to SDS PAGE followed by western blot with 13740-1-AP (DUT antibody) at dilution of 1:1000 incubated at room temperature for 1.5 hours.



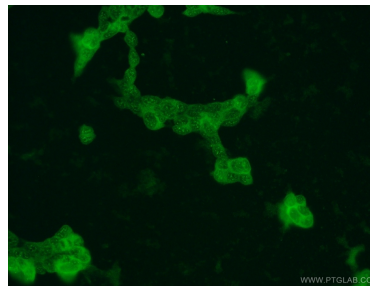
HEK-293 cells were subjected to SDS PAGE followed by western blot with 13740-1-AP (DUT antibody) at dilution of 1:700 incubated at 4 degree celsius over night.



Immunohistochemical analysis of paraffin-embedded human heart tissue slide using 13740-1-AP (DUT Antibody) at dilution of 1:200 (under 10x lens).



Immunohistochemical analysis of paraffin-embedded human heart tissue slide using 13740-1-AP (DUT Antibody) at dilution of 1:200 (under 40x lens).



Immunofluorescent analysis of HEK-293 cells using 13740-1-AP (DUT antibody) at dilution of 1:50 and Alexa Fluor 488-conjugated AffiniPure Goat Anti-Rabbit IgG(H+L).