

# KERA Polyclonal antibody

Catalog Number: 13728-1-AP

## Basic Information

**Catalog Number:**

13728-1-AP

**Size:**

650 µg/ml

**Source:**

Rabbit

**Isotype:**

IgG

**Immunogen Catalog Number:**

AG4689

**GenBank Accession Number:**

BC032667

**GeneID (NCBI):**

11081

**UNIPROT ID:**

O60938

**Full Name:**

keratocan

**Calculated MW:**

352 aa, 41 kDa

**Observed MW:**

40-50 kDa

**Purification Method:**

Antigen affinity purification

**Recommended Dilutions:**

WB 1:500-1:1000

## Applications

**Tested Applications:**

WB, ELISA

**Species Specificity:**

human

**Positive Controls:**

WB : U-251 cells,

## Background Information

Keratocan and Lumican are the predominant class II SLRPs (Small leucine-rich proteoglycans) in the corneal stroma. While not totally corneal-specific together these SLRPs are excellent biomarkers for the tissue. Mutant mice deficient for keratocan expression have transparent but thin corneal stromas with a mild increase in collagen fibril diameter with no further abnormalities. In humans, mutations in the keratocan gene are associated with a flattened cornea in a rare condition known as cornea plana. The relative specificity of keratocan to corneal keratocytes has been useful for tissue-specific targeting for genetic manipulation of the corneal stroma. (PMID: 32663498)

## Storage

**Storage:**

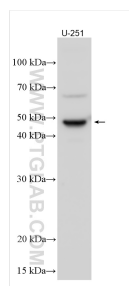
Store at -20°C. Stable for one year after shipment.

**Storage Buffer:**

PBS with 0.02% sodium azide and 50% glycerol pH 7.3.

Aliquoting is unnecessary for -20°C storage

## Selected Validation Data



U-251 cells were subjected to SDS PAGE followed by western blot with 13728-1-AP (KERA antibody) at dilution of 1:500 incubated at room temperature for 1.5 hours.