

For Research Use Only

TTF2 Polyclonal antibody

Catalog Number: 13722-1-AP

3 Publications



Basic Information

Catalog Number:

13722-1-AP

Size:

1100 ug/ml

Source:

Rabbit

Isotype:

IgG

Immunogen Catalog Number:

AG4671

GenBank Accession Number:

BC030058

GeneID (NCBI):

8458

UNIPROT ID:

Q9UNY4

Full Name:

transcription termination factor, RNA polymerase II

Calculated MW:

1162 aa, 129 kDa

Observed MW:

130 kDa

Purification Method:

Antigen affinity purification

Recommended Dilutions:

WB 1:2000-1:10000

IP 0.5-4.0 ug for 1.0-3.0 mg of total protein lysate

IHC 1:20-1:200

IF/ICC 1:200-1:800

Applications

Tested Applications:

WB, IHC, IF/ICC, IP, ELISA

Cited Applications:

WB, IHC

Species Specificity:

human, mouse, rat

Cited Species:

human, rat

Positive Controls:

WB : A2780 cells, HeLa cells, Jurkat cells

IP : A2780 cells,

IHC : human ovary tumor tissue,

IF/ICC : HeLa cells,

Note-IHC: suggested antigen retrieval with TE buffer pH 9.0; (*) Alternatively, antigen retrieval may be performed with citrate buffer pH 6.0

Background Information

Transcription elongation is an key target for control of eukaryotic gene expression. After initiating from a promoter, the RNA polymerase II elongation complex is subjected to a block to elongation by the action of components of N-TEF (negative transcription elongation factor) [PMID: 9748214]. Transcription termination factor 2 (TTF2) is a DsDNA-dependent ATPase that acts as a transcription termination factor by coupling ATP hydrolysis with removal of RNA polymerase II from the DNA template. It also contribute to mitotic transcription repression, and involved in pre-mRNA splicing [PMID:15125840, 12927788].

Notable Publications

Author	Pubmed ID	Journal	Application
Mei Ha	33250241	Sci Total Environ	WB
Weizhu Zhao	37225691	Nat Commun	IHC
Brannan Kris K	22483619	Mol Cell	WB

Storage

Storage:

Store at -20°C. Stable for one year after shipment.

Storage Buffer:

PBS with 0.02% sodium azide and 50% glycerol pH 7.3.

Aliquoting is unnecessary for -20°C storage

For technical support and original validation data for this product please contact:

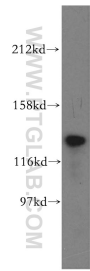
T: 4006900926

E: Proteintech-CN@ptglab.com

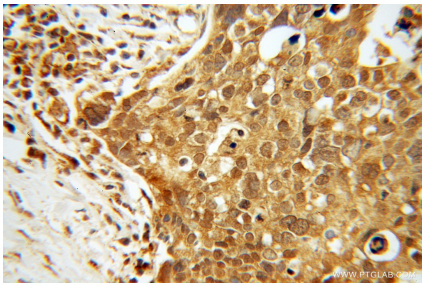
W: ptgcn.com

This product is exclusively available under Proteintech Group brand and is not available to purchase from any other manufacturer.

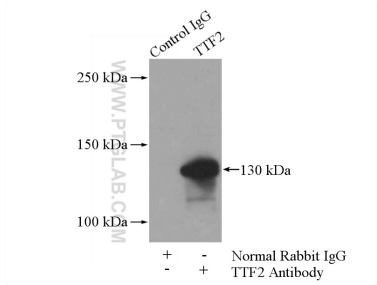
Selected Validation Data



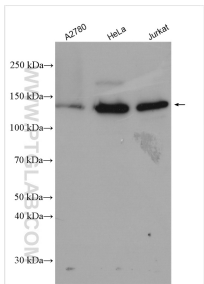
A2780 cells were subjected to SDS PAGE followed by western blot with 13722-1-AP (TTF2 antibody) at dilution of 1:500 incubated at room temperature for 1.5 hours.



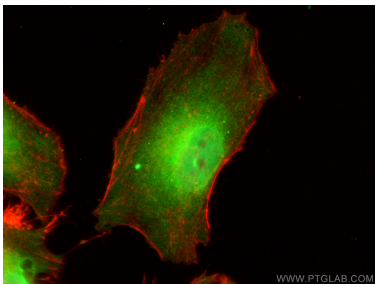
Immunohistochemical analysis of paraffin-embedded human ovary tumor using 13722-1-AP (TTF2 antibody) at dilution of 1:100 (under 40x lens).



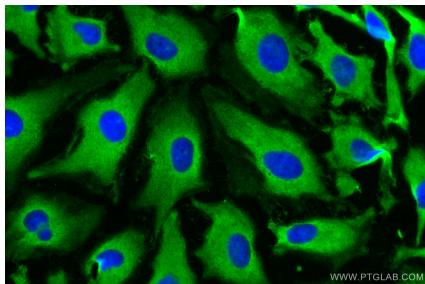
IP result of anti-TTF2 (IP:13722-1-AP, 4ug; Detection:13722-1-AP 1:500) with A2780 cells lysate 840ug.



Various lysates were subjected to SDS PAGE followed by western blot with 13722-1-AP (TTF2 antibody) at dilution of 1:5000 incubated at room temperature for 1.5 hours.



Immunofluorescent analysis of (4% PFA) fixed HeLa cells using TTF2 antibody (13722-1-AP) at dilution of 1:400 and Coralite@488-Conjugated AffiniPure Goat Anti-Rabbit IgG(H+L) (SA00013-2), CL594-phalloidin (black).



Immunofluorescent analysis of (-20°C Ethanol) fixed HeLa cells using TTF2 antibody (13722-1-AP) at dilution of 1:400 and Coralite@488-Conjugated AffiniPure Goat Anti-Rabbit IgG(H+L) (SA00013-2).