

For Research Use Only

# BOULE Polyclonal antibody

Catalog Number: 13720-1-AP

1 Publications



## Basic Information

### Catalog Number:

13720-1-AP

### Concentration:

650 ug/ml

### Source:

Rabbit

### Isotype:

IgG

### Immunogen Catalog Number:

AG4662

### GenBank Accession Number:

BC033674

### GeneID (NCBI):

66037

### UNIPROT ID:

Q8N9W6

### Full Name:

bol, boule-like (Drosophila)

### Calculated MW:

283 aa, 31 kDa

### Observed MW:

38-42 kDa

### Purification Method:

Antigen affinity purification

### Recommended Dilutions:

WB 1:5000-1:50000

IP 0.5-4.0 ug for 1.0-3.0 mg of total protein lysate

IHC 1:1000-1:4000

IF-P 1:50-1:500

IF-Fro 1:200-1:800

## Applications

### Tested Applications:

WB, IHC, IF-P, IF-Fro, IP, ELISA

### Cited Applications:

IHC

### Species Specificity:

human, mouse, rat

### Cited Species:

human

### Positive Controls:

WB : mouse testis tissue, rat testis tissue

IP : mouse testis tissue,

IHC : mouse testis tissue, mouse ovary tissue

IF-P : mouse testis tissue,

IF-Fro : mouse testis tissue,

**Note-IHC: suggested antigen retrieval with TE buffer pH 9.0; (\*) Alternatively, antigen retrieval may be performed with citrate buffer pH 6.0**

## Background Information

BOULE, also called BOLL, belongs to the RRM DAZ family. BOULE has been identified as being involved in regulating the development and differentiation of germ cells and playing an essential role in infertility (PMID: 31683986). BOULE is specifically expressed in testis, but not in early embryos, primordial germ cells, and spermatogonial cells. It is first expressed in the cytoplasm of spermatocytes and then persists through meiosis. BOULE has 5 isoforms with the molecular mass of 19 and 31-38 kDa. This antibody detects two bands in testis, the lower band of ~40 kDa in size corresponds to the predicted endogenous BOULE protein, while the upper band may be an isoform or posttranslationally modified version of the BOULE protein (PMID: 27632217).

## Notable Publications

Author	Pubmed ID	Journal	Application
Ru Yu	34904262	Andrologia	IHC

## Storage

### Storage:

Store at -20°C. Stable for one year after shipment.

### Storage Buffer:

PBS with 0.02% sodium azide and 50% glycerol, pH7.3

Aliquoting is unnecessary for -20°C storage

For technical support and original validation data for this product please contact:

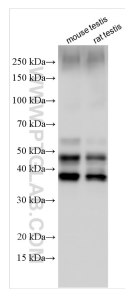
T: 4006900926

E: [Proteintech-CN@ptglab.com](mailto:Proteintech-CN@ptglab.com)

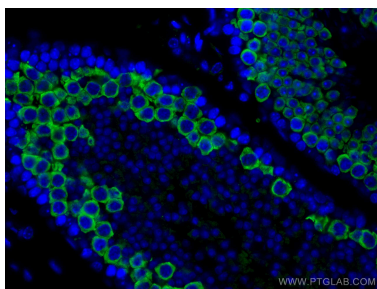
W: [ptgcn.com](http://ptgcn.com)

**This product is exclusively available under Proteintech Group brand and is not available to purchase from any other manufacturer.**

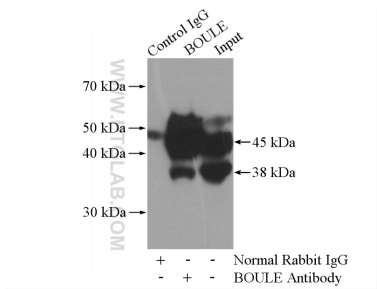
Selected Validation Data



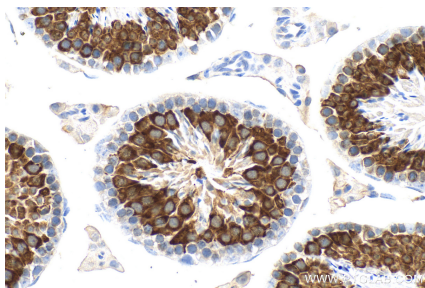
Various lysates were subjected to SDS PAGE followed by western blot with 13720-1-AP (BOULE antibody) at dilution of 1:10000 incubated at room temperature for 1.5 hours.



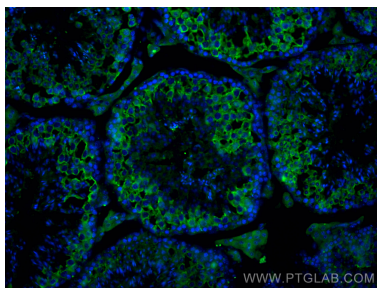
Immunofluorescent analysis of (4% PFA) fixed mouse testis tissue using BOULE antibody (13720-1-AP) at dilution of 1:200 and CoraLite®488-Conjugated AffiniPure Goat Anti-Rabbit IgG(H+L).



IP result of anti-BOULE (IP:13720-1-AP, 4ug; Detection:13720-1-AP 1:1000) with mouse testis tissue lysate 4000ug.



Immunohistochemical analysis of paraffin-embedded mouse testis tissue slide using 13720-1-AP (BOULE antibody) at dilution of 1:2000 (under 40x lens). Heat mediated antigen retrieval with Tris-EDTA buffer (pH 9.0).



Immunofluorescent analysis of (4% PFA) fixed frozen OCT-embedded mouse testis tissue using 13720-1-AP (BOULE antibody) at dilution of 1:400 and CoraLite488-Conjugated AffiniPure Goat Anti-Rabbit IgG(H+L).