

For Research Use Only

CCDC6 Polyclonal antibody

Catalog Number: 13717-1-AP

6 Publications



Basic Information

Catalog Number:

13717-1-AP

Size:

600 ug/ml

Source:

Rabbit

Isotype:

IgG

Immunogen Catalog Number:

AG4658

GenBank Accession Number:

BC036757

GeneID (NCBI):

8030

UNIPROT ID:

Q16204

Full Name:

coiled-coil domain containing 6

Calculated MW:

474 aa, 53 kDa

Observed MW:

65 kDa

Purification Method:

Antigen affinity purification

Recommended Dilutions:

WB 1:1000-1:4000

IF/ICC 1:200-1:800

Applications

Tested Applications:

WB, IF/ICC, ELISA

Cited Applications:

WB

Species Specificity:

human

Cited Species:

human, rat

Positive Controls:

WB : HCT 116 cells, HeLa cells, K-562 cells, MCF-7 cells

IF/ICC : MCF-7 cells,

Background Information

Notable Publications

| Author | Pubmed ID | Journal | Application |
|---------------|-----------|----------------|-------------|
| Xiaoyue Ding | 34828386 | Genes (Basel) | WB |
| Xiaotian Sun | 31676720 | Mol Cancer Res | WB |
| Dong Lingling | 35351588 | Brain Res Bull | WB |

Storage

Storage:

Store at -20°C. Stable for one year after shipment.

Storage Buffer:

PBS with 0.02% sodium azide and 50% glycerol pH 7.3.

Aliquoting is unnecessary for -20°C storage

For technical support and original validation data for this product please contact:

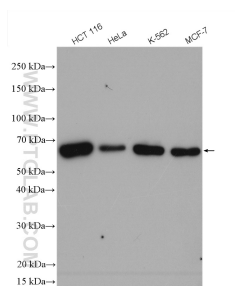
T: 4006900926

E: Proteintech-CN@ptglab.com

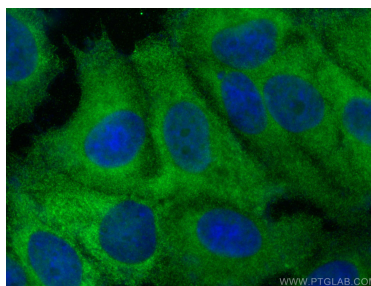
W: ptgcn.com

This product is exclusively available under Proteintech Group brand and is not available to purchase from any other manufacturer.

Selected Validation Data



Various lysates were subjected to SDS PAGE followed by western blot with 13717-1-AP (CCDC6 antibody) at dilution of 1:2000 incubated at room temperature for 1.5 hours.



Immunofluorescent analysis of (-20°C Methanol) fixed MCF-7 cells using CCDC6 antibody (13717-1-AP) at dilution of 1:400 and CoraLite® 488-Conjugated AffiniPure Goat Anti-Rabbit IgG(H+L) (SA00013-2).