

For Research Use Only

LSS Polyclonal antibody

Catalog Number: 13715-1-AP **12 Publications**



Basic Information

Catalog Number:

13715-1-AP

Size:

500 µg/ml

Source:

Rabbit

Isotype:

IgG

Immunogen Catalog Number:

AG4655

GenBank Accession Number:

BC035638

GeneID (NCBI):

4047

UNIPROT ID:

P48449

Full Name:

lanosterol synthase (2,3-oxidosqualene-lanosterol cyclase)

Calculated MW:

732 aa, 83 kDa

Observed MW:

70-75 kDa

Purification Method:

Antigen affinity purification

Recommended Dilutions:

WB 1:1000-1:5000

IP 0.5-4.0 µg for 1.0-3.0 mg of total protein lysate

IHC 1:20-1:200

IF 1:20-1:200

Applications

Tested Applications:

FC, IF/ICC, IHC, IP, WB, ELISA

Cited Applications:

WB, IF, IHC

Species Specificity:

human, mouse, rat

Cited Species:

human, rat, mouse, rabbit

Positive Controls:

WB : HT-1376 cells, PC-3 cells, HeLa cells, HepG2 cells, mouse testis tissue, human brain tissue, mouse pancreas tissue, mouse liver tissue, SH-SY5Y cells

IP : HepG2 cells,

IHC : human liver tissue, mouse testis tissue

IF : HepG2 cells,

Note-IHC: suggested antigen retrieval with TE buffer pH 9.0; (*) Alternatively, antigen retrieval may be performed with citrate buffer pH 6.0

Background Information

LSS, also named as OSC, is lanosterol synthase which catalyzes the cyclization of (S)-2,3 oxidosqualene to lanosterol, a reaction that forms the sterol nucleus. LSS gene has three isoforms with MW 74 kDa and 82-85 kDa. This antibody can recognize all these three isoforms.

Notable Publications

Author	Pubmed ID	Journal	Application
Audrey Basque	36279966	Toxicol In Vitro	WB
Timothy J Grunkemeyer	34029588	J Biol Chem	WB
Ryan S Wible	29367259	Mol Pharmacol	WB

Storage

Storage:

Store at -20°C. Stable for one year after shipment.

Storage Buffer:

PBS with 0.02% sodium azide and 50% glycerol pH 7.3.

Aliquoting is unnecessary for -20°C storage

For technical support and original validation data for this product please contact:

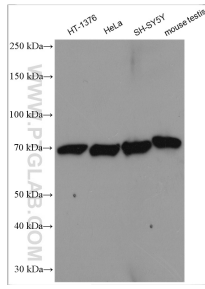
T: 4006900926

E: Proteintech-CN@ptglab.com

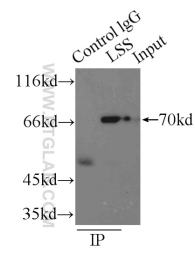
W: ptgcn.com

This product is exclusively available under Proteintech Group brand and is not available to purchase from any other manufacturer.

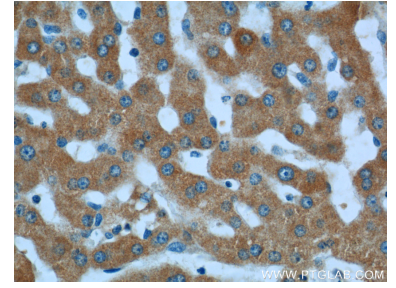
Selected Validation Data



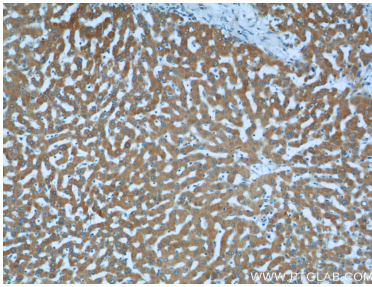
Various lysates were subjected to SDS PAGE followed by western blot with 13715-1-AP (LSS antibody) at dilution of 1:2500 incubated at room temperature for 1.5 hours.



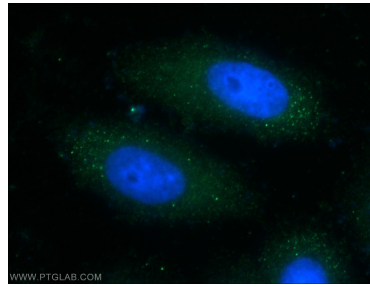
IP result of anti-LSS (IP:13715-1-AP, 3ug; Detection:13715-1-AP 1:500) with HepG2 cells lysate 2900ug.



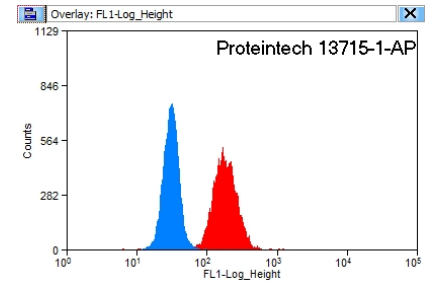
Immunohistochemical analysis of paraffin-embedded human liver tissue slide using 13715-1-AP (LSS Antibody) at dilution of 1:50 (under 40x lens).



Immunohistochemical analysis of paraffin-embedded human liver tissue slide using 13715-1-AP (LSS Antibody) at dilution of 1:50 (under 10x lens).



Immunofluorescent analysis of HepG2 cells using 13715-1-AP (LSS antibody) at dilution of 1:50 and Alexa Fluor 488-conjugated AffiniPure Goat Anti-Rabbit IgG(H+L).



1X10⁶ HeLa cells were stained with 0.2ug LSS antibody (13715-1-AP, red) and control antibody (13715-1-AP, blue). Fixed with 90% MeOH blocked with 3% BSA (30 min). Alexa Fluor 488-conjugated AffiniPure Goat Anti-Rabbit IgG(H+L) with dilution 1:1500.