

For Research Use Only

# LARP1 Polyclonal antibody

Catalog Number: 13708-1-AP

Featured Product

3 Publications



## Basic Information

**Catalog Number:**

13708-1-AP

**Size:**

513 µg/ml

**Source:**

Rabbit

**Isotype:**

IgG

**Immunogen Catalog Number:**

AG4645

**GenBank Accession Number:**

BC033856

**GeneID (NCBI):**

23367

**UNIPROT ID:**

Q6PKGO

**Full Name:**

La ribonucleoprotein domain family, member 1

**Calculated MW:**

1096 aa, 124 kDa

**Observed MW:**

140-150 kDa

**Purification Method:**

Antigen affinity purification

**Recommended Dilutions:**

WB 1:2000-1:10000

IHC 1:50-1:500

IF 1:50-1:500

## Applications

**Tested Applications:**

IF/ICC, IHC, WB, ELISA

**Cited Applications:**

WB

**Species Specificity:**

human, mouse, rat, drosophila

**Cited Species:**

human, mouse

**Note-IHC: suggested antigen retrieval with TE buffer pH 9.0; (\*) Alternatively, antigen retrieval may be performed with citrate buffer pH 6.0**

**Positive Controls:**

**WB:** HEK-293T cells, HeLa cells, HepG2 cells, mouse heart tissue, mouse testis tissue, mouse brain tissue

**IHC:** human liver cancer tissue, human ovary tumor tissue

**IF:** HepG2 cells,

## Background Information

### Notable Publications

Author	Pubmed ID	Journal	Application
Annie Hien	33054857	Mol Autism	WB
Pedro Fuentes	34818049	Sci Adv	WB
Yuan-Qin Min	37211047	Mol Cell Proteomics	WB

## Storage

**Storage:**

Store at -20°C. Stable for one year after shipment.

**Storage Buffer:**

PBS with 0.02% sodium azide and 50% glycerol pH 7.3.

Aliquoting is unnecessary for -20°C storage

For technical support and original validation data for this product please contact:

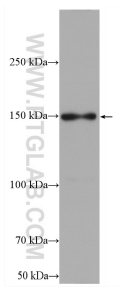
T: 4006900926

E: Proteintech-CN@ptglab.com

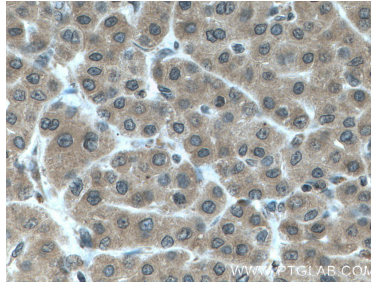
W: ptgcn.com

**This product is exclusively available under Proteintech Group brand and is not available to purchase from any other manufacturer.**

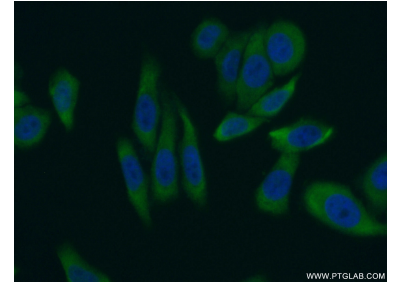
## Selected Validation Data



HEK-293T cells were subjected to SDS PAGE followed by western blot with 13708-1-AP (LARP1 antibody) at dilution of 1:5000 incubated at room temperature for 1.5 hours.



Immunohistochemical analysis of paraffin-embedded human liver cancer tissue slide using 13708-1-AP (LARP1 antibody) at dilution of 1:200 (under 40x lens. Heat mediated antigen retrieval with Tris-EDTA buffer (pH 9.0).



Immunofluorescent analysis of (10% Formaldehyde) fixed HepG2 cells using 13708-1-AP (LARP1 antibody) at dilution of 1:50 and Alexa Fluor 488-conjugated AffiniPure Goat Anti-Rabbit IgG(H+L).