

For Research Use Only

# SEPT12 Polyclonal antibody, PBS Only

Catalog Number:13707-1-PBS



## Basic Information

<b>Catalog Number:</b> 13707-1-PBS	<b>GenBank Accession Number:</b> BC035619	<b>Purification Method:</b> Antigen affinity purification
<b>Concentration:</b> 1mg/ml	<b>GeneID (NCBI):</b> 124404	
<b>Source:</b> Rabbit	<b>UNIPROT ID:</b> Q8IYM1	
<b>Isotype:</b> IgG	<b>Full Name:</b> septin 12	
<b>Immunogen Catalog Number:</b> AG4644	<b>Calculated MW:</b> 358 aa, 41 kDa	
	<b>Observed MW:</b> 41 kDa	

## Applications

**Tested Applications:**  
WB, ELISA

**Species Specificity:**  
human, mouse, rat

## Background Information

SEPT12, also known as Septin 12, SPGF10, is a member of the Septin GTPase family. The Septin family is a group of evolutionarily conserved GTP-binding proteins involved in various cellular processes. SEPT12 is a cytoskeletal GTPase that is specifically enriched in the testis. It plays a critical role in spermatogenesis, particularly in the formation and maintenance of sperm tail structures. Mutations or downregulation of SEPT12 have been linked to male infertility due to defects in sperm morphology and function(PMID: 30513371).

## Storage

**Storage:**  
Store at -80°C.  
**The product is shipped with ice packs. Upon receipt, store it immediately at -80°C**

**Storage Buffer:**  
PBS Only

For technical support and original validation data for this product please contact:

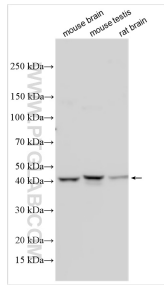
T: 4006900926

E: [Proteintech-CN@ptglab.com](mailto:Proteintech-CN@ptglab.com)

W: [ptgcn.com](http://ptgcn.com)

**This product is exclusively available under Proteintech Group brand and is not available to purchase from any other manufacturer.**

## Selected Validation Data



Various lysates were subjected to SDS PAGE followed by western blot with 13707-1-AP (SEPT12 antibody) at dilution of 1:800 incubated at room temperature for 1.5 hours. This data was developed using the same antibody clone with 13707-1-PBS in a different storage buffer formulation.