

For Research Use Only

BCKDHB Polyclonal antibody

Catalog Number: 13685-1-AP

10 Publications



Basic Information

Catalog Number:

13685-1-AP

Size:

350 µg/ml

Source:

Rabbit

Isotype:

IgG

Immunogen Catalog Number:

AG4552

GenBank Accession Number:

BC040139

GeneID (NCBI):

594

UNIPROT ID:

P21953

Full Name:

branched chain keto acid
dehydrogenase E1, beta polypeptide

Calculated MW:

392 aa, 43 kDa

Observed MW:

37 kDa

Purification Method:

Antigen affinity purification

Recommended Dilutions:

WB 1:500-1:2000

IHC 1:50-1:500

Applications

Tested Applications:

WB, IHC, ELISA

Cited Applications:

WB, IHC, RIP

Species Specificity:

human, mouse, rat

Cited Species:

human, mouse, sheep

**Note-IHC: suggested antigen retrieval with
TE buffer pH 9.0; (*) Alternatively, antigen
retrieval may be performed with citrate
buffer pH 6.0**

Positive Controls:

WB : mouse liver tissue, Transfected HEK-293 cells, rat
liver tissue

IHC : human colon cancer tissue, human stomach
tissue

Background Information

Branched-chain alpha-keto acid dehydrogenase E1 component beta chain (BCKDHB; BCKDE1B; BCKDH E1-beta) is a subunit of the BCKDH complex, which is a mitochondrial enzyme in the degradation pathway for branched-chain amino acids (BCAA). Together with BCKDHA, BCKDHB forms the E1 subunit of this complex, whereas DBT and DLD are the E2 and E3 subunits, respectively. A deficiency of the BCKDH complex in humans causes maple syrup urine disease (MSUD), a severe neurometabolic disorder diagnosed by the detection of alloisoleucine in plasma (MIM 248600). (PMID: 30709776)

Notable Publications

Author	Pubmed ID	Journal	Application
Yanan Wang	36433955	Nat Commun	IHC
Dongdong Yang	36417878	Cell Rep	WB
Tao Shi	29575645	Anim Sci J	WB

Storage

Storage:

Store at -20°C. Stable for one year after shipment.

Storage Buffer:

PBS with 0.02% sodium azide and 50% glycerol pH 7.3.

Aliquoting is unnecessary for -20°C storage

For technical support and original validation data for this product please contact:

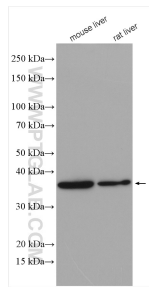
T: 4006900926

E: Proteintech-CN@ptglab.com

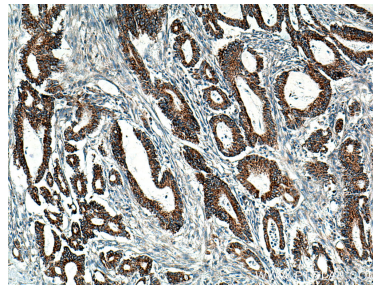
W: ptgcn.com

This product is exclusively available under Proteintech Group brand and is not available to purchase from any other manufacturer.

Selected Validation Data



Various lysates were subjected to SDS PAGE followed by western blot with 13685-1-AP (BCKDHB antibody) at dilution of 1:1000 incubated at room temperature for 1.5 hours.



Immunohistochemical analysis of paraffin-embedded human colon cancer tissue slide using 13685-1-AP (BCKDHB antibody) at dilution of 1:200 (under 10x lens). Heat mediated antigen retrieval with Tris-EDTA buffer (pH 9.0).