

For Research Use Only

# CHMP4B Polyclonal antibody, PBS Only

Catalog Number: 13683-1-PBS

Featured Product



## Basic Information

Catalog Number:

13683-1-PBS

Concentration:

1 mg/ml

Source:

Rabbit

Isotype:

IgG

Immunogen Catalog Number:

AG4544

GenBank Accession Number:

BC033859

GeneID (NCBI):

128866

UNIPROT ID:

Q9H444

Full Name:

chromatin modifying protein 4B

Calculated MW:

224 aa, 25 kDa

Observed MW:

25-33 kDa

Purification Method:

Antigen affinity purification

## Applications

Tested Applications:

WB, IF/ICC, Indirect ELISA

Species Specificity:

human, mouse, rat

## Background Information

CHMP4B (charged multivesicular body protein 4b) is a human homologue of yeast Snf7p (also named Vps32p) and a member of CHMP family which is implicated in multivesicular body (MVB) sorting. The CHMP proteins are components of ESCRT-III (endosomal sorting complex required for transport III), a complex involved in degradation of surface receptor proteins and formation of endocytic multivesicular bodies. Among seven CHMP family members, only CHMP4 has been found to interact with Alix, a multifunctional adaptor protein in various cellular functions. This antibody is highly specific to the CHMP4B and it doesn't cross-react with other CHMPs as well as other CHMP4s (CHMP4A and CHMP4C). CHMP4B can be detected 25-33 kDa by post-translational modification (PMID:26490837).

## Storage

Storage:

Store at -80°C.

The product is shipped with ice packs. Upon receipt, store it immediately at -80°C

Storage Buffer:

PBS only, pH7.3

For technical support and original validation data for this product please contact:

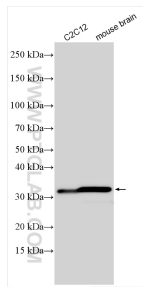
T: 4006900926

E: [Proteintech-CN@ptglab.com](mailto:Proteintech-CN@ptglab.com)

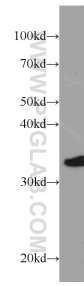
W: [ptgcn.com](http://ptgcn.com)

This product is exclusively available under Proteintech Group brand and is not available to purchase from any other manufacturer.

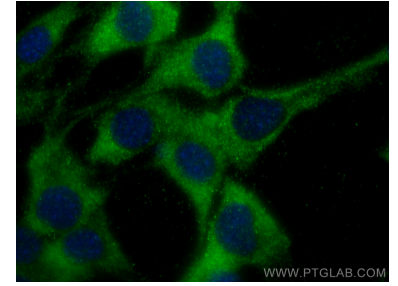
## Selected Validation Data



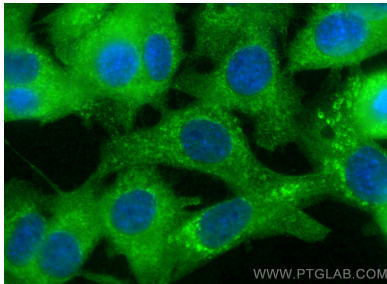
Various lysates were subjected to SDS PAGE followed by western blot with 13683-1-AP (CHMP4B antibody) at dilution of 1:4000 incubated at room temperature for 1.5 hours. This data was developed using the same antibody clone with 13683-1-PBS in a different storage buffer formulation.



mouse heart tissue were subjected to SDS PAGE followed by western blot with 13683-1-AP (CHMP4B antibody) at dilution of 1:200 incubated at room temperature for 1.5 hours. This data was developed using the same antibody clone with 13683-1-PBS in a different storage buffer formulation.



Immunofluorescent analysis of (-20°C Methanol) fixed C2C12 cells using CHMP4B antibody (13683-1-AP) at dilution of 1:200 and CoraLite®488-Conjugated AffiniPure Goat Anti-Rabbit IgG(H+L). This data was developed using the same antibody clone with 13683-1-PBS in a different storage buffer formulation.



Immunofluorescent analysis of (-20°C Ethanol) fixed C2C12 cells using CHMP4B antibody (13683-1-AP) at dilution of 1:400 and CoraLite®488-Conjugated Goat Anti-Rabbit IgG(H+L) (SA00013-2). This data was developed using the same antibody clone with 13683-1-PBS in a different storage buffer formulation.