

For Research Use Only

MPPED1 Polyclonal antibody

Catalog Number: 13677-1-AP



Basic Information

Catalog Number:

13677-1-AP

Size:

240 µg/ml

Source:

Rabbit

Isotype:

IgG

Immunogen Catalog Number:

AG4672

GenBank Accession Number:

BC028035

GeneID (NCBI):

758

UNIPROT ID:

O15442

Full Name:

metallophosphoesterase domain
containing 1

Calculated MW:

326 aa, 37 kDa

Observed MW:

37 kDa

Purification Method:

Antigen affinity purification

Recommended Dilutions:

WB 1:500-1:3000

IHC 1:20-1:200

IF 1:10-1:100

Applications

Tested Applications:

IF/ICC, IHC, WB, ELISA

Species Specificity:

human, mouse, rat

**Note-IHC: suggested antigen retrieval with
TE buffer pH 9.0; (*) Alternatively, antigen
retrieval may be performed with citrate
buffer pH 6.0**

Positive Controls:

WB: mouse brain tissue, rat brain tissue

IHC: human pancreas tissue, human brain tissue,
human heart tissue

IF: HeLa cells,

Background Information

Storage

Storage:

Store at -20°C. Stable for one year after shipment.

Storage Buffer:

PBS with 0.02% sodium azide and 50% glycerol pH 7.3.

Aliquoting is unnecessary for -20°C storage

For technical support and original validation data for this product please contact:

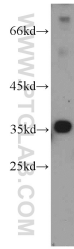
T: 4006900926

E: Proteintech-CN@ptglab.com

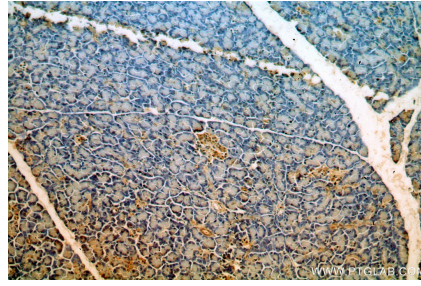
W: ptgcn.com

This product is exclusively available under Proteintech Group brand and is not available to purchase from any other manufacturer.

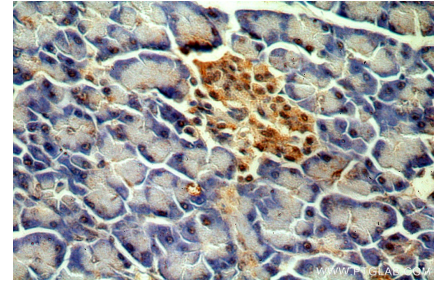
Selected Validation Data



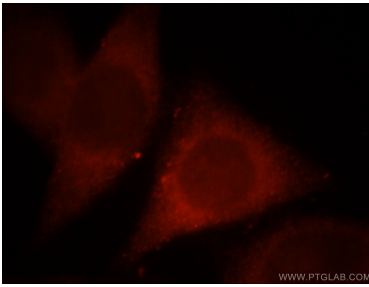
mouse brain tissue were subjected to SDS PAGE followed by western blot with 13677-1-AP (MPPED1 antibody) at dilution of 1:1500 incubated at room temperature for 1.5 hours.



Immunohistochemical analysis of paraffin-embedded human pancreas using 13677-1-AP (MPPED1 antibody) at dilution of 1:50 (under 10x lens).



Immunohistochemical analysis of paraffin-embedded human pancreas using 13677-1-AP (MPPED1 antibody) at dilution of 1:50 (under 40x lens).



Immunofluorescent analysis of HeLa cells, using MPPED1 antibody 13677-1-AP at 1:25 dilution and Rhodamine-labeled goat anti-rabbit IgG (red).