

For Research Use Only

WDR1 Polyclonal antibody

Catalog Number: 13676-1-AP

Featured Product

9 Publications



Basic Information

Catalog Number:

13676-1-AP

Size:

700 ug/ml

Source:

Rabbit

Isotype:

IgG

Immunogen Catalog Number:

AG4670

GenBank Accession Number:

BC030541

GeneID (NCBI):

9948

UNIPROT ID:

O75083

Full Name:

WD repeat domain 1

Calculated MW:

606 aa, 66 kDa

Observed MW:

66-70 kDa

Purification Method:

Antigen affinity purification

Recommended Dilutions:

WB 1:500-1:3000

IP 0.5-4.0 ug for 1.0-3.0 mg of total protein lysate

IHC 1:150-1:600

Applications

Tested Applications:

WB, IHC, IP, ELISA

Cited Applications:

WB

Species Specificity:

human, mouse, rat

Cited Species:

human, mouse

Note-IHC: suggested antigen retrieval with TE buffer pH 9.0; (*) Alternatively, antigen retrieval may be performed with citrate buffer pH 6.0

Positive Controls:

WB : HEK-293 cells, rat skeletal muscle tissue, mouse skeletal muscle, Jurkat cells, U-87 cells

IP : mouse skeletal muscle tissue,

IHC : human colon tissue, human testis tissue

Background Information

WDR1, which belongs to the WD repeat AIP1 family, also known as AIP1, is a 606 amino acid protein that localizes to the cytoskeleton. WD repeats are approximately 30- to 40-amino acid domains containing several conserved residues, mostly including a trp-asn at the C-terminal end. WDR1 induces the disassembly of actin filaments in conjunction with ADF/cofilin family proteins (PMID:15629458, 27557945, 29751004). WDR1 mutations may impair the ability of WDR1 to regulate cofilin-mediated actin depolymerization, and are associated with periodic fever, immunodeficiency, and thrombocytopenia syndrome (PMID: 27557945, 27994071, 29751004).

Notable Publications

| Author | Pubmed ID | Journal | Application |
|-------------|-----------|------------------------|-------------|
| Baiyin Yuan | 24840128 | Am J Pathol | WB |
| Baiyin Yuan | 29989053 | Int J Biol Sci | WB |
| Ran An | 35861209 | Exp Biol Med (Maywood) | WB |

Storage

Storage:

Store at -20°C. Stable for one year after shipment.

Storage Buffer:

PBS with 0.02% sodium azide and 50% glycerol pH 7.3.

Aliquoting is unnecessary for -20°C storage

For technical support and original validation data for this product please contact:

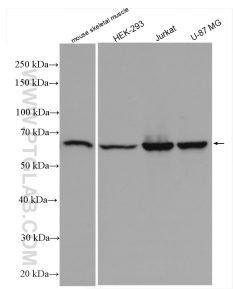
T: 4006900926

E: Proteintech-CN@ptglab.com

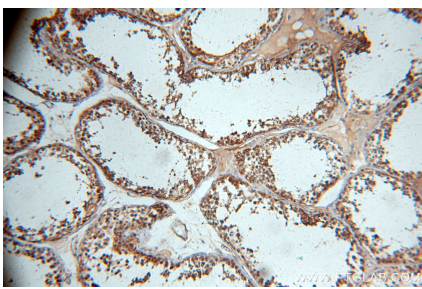
W: ptgcn.com

This product is exclusively available under Proteintech Group brand and is not available to purchase from any other manufacturer.

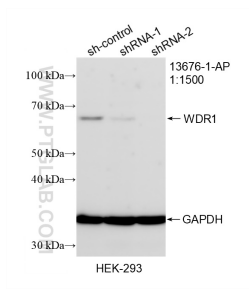
Selected Validation Data



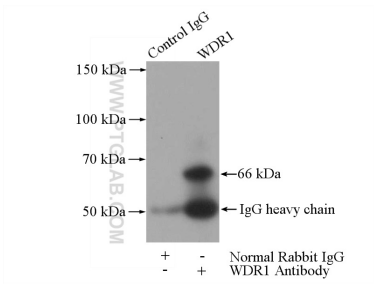
Various lysates were subjected to SDS PAGE followed by western blot with 13676-1-AP (WDR1 antibody) at dilution of 1:1500 incubated at room temperature for 1.5 hours.



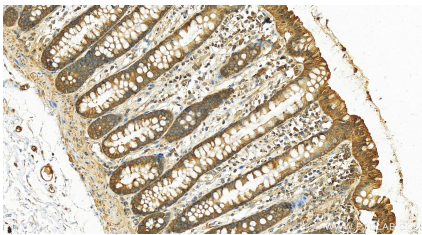
Immunohistochemical analysis of paraffin-embedded human testis using 13676-1-AP (WDR1 antibody) at dilution of 1:100 (under 10x lens).



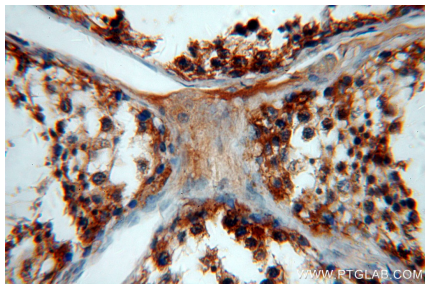
WB result of WDR1 antibody (13676-1-AP; 1:1500; incubated at room temperature for 1.5 hours) with sh-Control and sh-WDR1 transfected HEK-293 cells.



IP result of anti-WDR1 (IP:13676-1-AP, 3ug; Detection:13676-1-AP 1:500) with mouse skeletal muscle tissue lysate 3600ug.



Immunohistochemical analysis of paraffin-embedded human normal colon slide using 13676-1-AP (WDR1 antibody) at dilution of 1:300 (under 20x lens). Heat mediated antigen retrieval with Tris-EDTA buffer (pH 9.0).



Immunohistochemical analysis of paraffin-embedded human testis using 13676-1-AP (WDR1 antibody) at dilution of 1:100 (under 40x lens).