

For Research Use Only

SFTP B Polyclonal antibody

Catalog Number: 13664-1-AP **3 Publications**



Basic Information

Catalog Number:

13664-1-AP

Size:

600 µg/ml

Source:

Rabbit

Isotype:

IgG

Immunogen Catalog Number:

AG4576

GenBank Accession Number:

BC032785

GeneID (NCBI):

6439

UNIPROT ID:

P07988

Full Name:

surfactant protein B

Calculated MW:

381 aa, 42 kDa

Observed MW:

43 kDa

Purification Method:

Antigen affinity purification

Recommended Dilutions:

WB 1:500-1:2000

IP 0.5-4.0 µg for 1.0-3.0 mg of total protein lysate

IHC 1:20-1:200

Applications

Tested Applications:

WB, IP, IHC, ELISA

Cited Applications:

WB, IF, IHC

Species Specificity:

human

Cited Species:

human, mouse

Note-IHC: suggested antigen retrieval with TE buffer pH 9.0; (*) Alternatively, antigen retrieval may be performed with citrate buffer pH 6.0

Positive Controls:

WB : human lung tissue, Y79 cells, A549 cells

IP : Y79 cells,

IHC : human heart tissue,

Background Information

Pulmonary surfactant-associated protein B(SFTP B) also named SFTP3, is a hydrophobic peptide that facilitates the formation and maintenance of a phospholipid-rich film at the alveolar air-liquid interface. SP-B is necessary for postnatal lung function. SFTP B as a risk biomarker for lung cancer. (PMID:36460583).

Notable Publications

Author	Pubmed ID	Journal	Application
Guangying Yang	35682694	Int J Mol Sci	WB
Xiaojing Yang	35689653	Environ Toxicol	WB
Hao Luo	37946295	Exp Hematol Oncol	WB,IHC,IF

Storage

Storage:

Store at -20°C. Stable for one year after shipment.

Storage Buffer:

PBS with 0.02% sodium azide and 50% glycerol pH 7.3.

Aliquoting is unnecessary for -20°C storage

For technical support and original validation data for this product please contact:

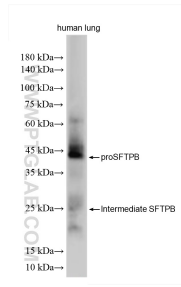
T: 4006900926

E: Proteintech-CN@ptglab.com

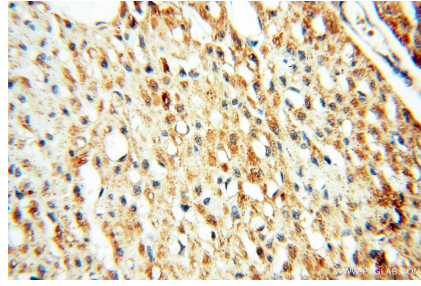
W: ptgcn.com

This product is exclusively available under Proteintech Group brand and is not available to purchase from any other manufacturer.

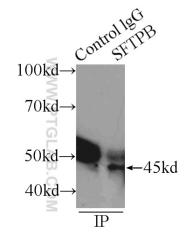
Selected Validation Data



Various lysates were subjected to SDS PAGE followed by western blot with 13664-1-AP (SFTPb antibody) at dilution of 1:1000 incubated at room temperature for 1.5 hours.



Immunohistochemical analysis of paraffin-embedded human heart using 13664-1-AP (SFTPb antibody) at dilution of 1:50 (under 40x lens).



IP result of anti-SFTPb (IP:13664-1-AP, 3ug; Detection:13664-1-AP 1:300) with Y79 cells lysate 3000ug.