

# NARFL Polyclonal antibody

Catalog Number: 13652-1-AP

1 Publications

## Basic Information

## Catalog Number:

13652-1-AP

## Size:

450 µg/ml

## Source:

Rabbit

## Isotype:

IgG

## Immunogen Catalog Number:

AG4217

## GenBank Accession Number:

BC030248

## GeneID (NCBI):

64428

## UNIPROT ID:

Q9H6Q4

## Full Name:

nuclear prelamin A recognition factor-like

## Calculated MW:

476 aa, 53 kDa

## Observed MW:

26-28 kDa

## Purification Method:

Antigen affinity purification

## Recommended Dilutions:

WB 1:1000-1:4000

IHC 1:50-1:500

## Applications

## Tested Applications:

IHC, WB, ELISA

## Cited Applications:

IF

## Species Specificity:

human, mouse, rat

## Cited Species:

human

**Note-IHC: suggested antigen retrieval with TE buffer pH 9.0; (\*) Alternatively, antigen retrieval may be performed with citrate buffer pH 6.0**

## Positive Controls:

WB : HeLa cells, HEK-293 cells

IHC : human colon tissue,

## Background Information

NARFL(Nuclear prelamin A recognition factor-like protein) is also named as PRN and belongs to the NARF family. This protein plays a role in cytoplasmic Fe-S protein biogenesis in mammalian cells. NARFL has 3 isoforms produced by alternative splicing.

## Notable Publications

Author	Pubmed ID	Journal	Application
Hongzhou Liu	37821486	Sci Rep	IF

## Storage

## Storage:

Store at -20°C. Stable for one year after shipment.

## Storage Buffer:

PBS with 0.02% sodium azide and 50% glycerol pH 7.3.

Aliquoting is unnecessary for -20°C storage

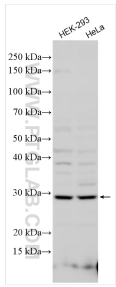
For technical support and original validation data for this product please contact:

T: 4006900926

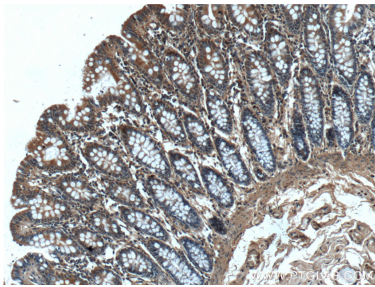
E: [Proteintech-CN@ptglab.com](mailto:Proteintech-CN@ptglab.com)W: [ptgcn.com](http://ptgcn.com)

This product is exclusively available under Proteintech Group brand and is not available to purchase from any other manufacturer.

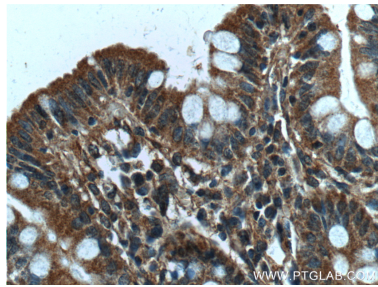
## Selected Validation Data



Various lysates were subjected to SDS PAGE followed by western blot with 13652-1-AP (NARFL antibody) at dilution of 1:2000 incubated at room temperature for 1.5 hours.



Immunohistochemical analysis of paraffin-embedded human colon tissue slide using 13652-1-AP (NARFL antibody) at dilution of 1:200 (under 10x lens).



Immunohistochemical analysis of paraffin-embedded human colon tissue slide using 13652-1-AP (NARFL antibody) at dilution of 1:200 (under 40x lens).