

For Research Use Only

# BCAT1 Polyclonal antibody

Catalog Number: 13640-1-AP

Featured Product

36 Publications



## Basic Information

Catalog Number:

13640-1-AP

Concentration:

600 ug/ml

Source:

Rabbit

Isotype:

IgG

Immunogen Catalog Number:

AG4574

GenBank Accession Number:

BC033864

GeneID (NCBI):

586

UNIPROT ID:

P54687

Full Name:

branched chain aminotransferase 1, cytosolic

Calculated MW:

320 aa, 36 kDa

Observed MW:

43-45 kDa

Purification Method:

Antigen affinity purification

Recommended Dilutions:

WB: 1:1000-1:4000

IHC: 1:50-1:500

IF/ICC: 1:200-1:800

## Applications

Tested Applications:

WB, IHC, IF/ICC, ELISA

Cited Applications:

WB, IHC, IF, IP

Species Specificity:

human, mouse, rat

Cited Species:

human, mouse, rat

**Note-IHC: suggested antigen retrieval with TE buffer pH 9.0; (\*) Alternatively, antigen retrieval may be performed with citrate buffer pH 6.0**

Positive Controls:

WB: Jurkat cells, HeLa cells, Neuro-2a cells

IHC: mouse brain tissue, human stomach cancer tissue

IF/ICC: HepG2 cells,

## Background Information

BCAT1, also named branched-chain amino acid transaminase1, is a cytosolic enzyme responsible for the reversible transamination of leucine, isoleucine, and valine that catalyzes the transformation of branched-chain L-amino acids (BCAA) into branched-chain  $\alpha$ -ketoacids (BCKA), thereby providing macromolecule precursors. It has been reported that BCAT1 is associated with tumor growth and disease progression (PMID:29255149). The 13640-1-AP antibody detects the bands around 43-45 kDa for different isoforms and higher molecular weight for phosphorylation modification of this protein.

## Notable Publications

Author	Pubmed ID	Journal	Application
Lili Tan	36182869	Biochem Biophys Res Commun	WB, IF
Yunyun Liu	36176992	Front Cardiovasc Med	WB
Haikuo Li	36265491	Cell Metab	IF

## Storage

Storage:

Store at -20°C. Stable for one year after shipment.

Storage Buffer:

PBS with 0.02% sodium azide and 50% glycerol, pH7.3

Aliquoting is unnecessary for -20°C storage

For technical support and original validation data for this product please contact:

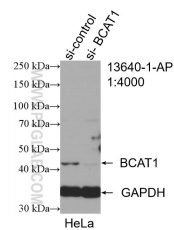
T: 4006900926

E: [Proteintech-CN@ptglab.com](mailto:Proteintech-CN@ptglab.com)

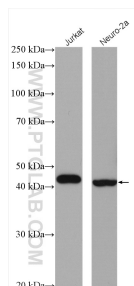
W: [ptgcn.com](http://ptgcn.com)

**This product is exclusively available under Proteintech Group brand and is not available to purchase from any other manufacturer.**

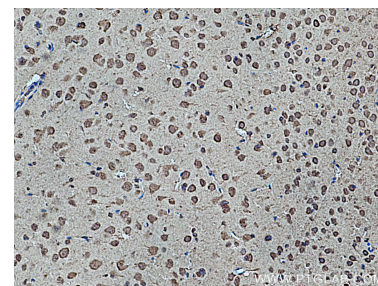
## Selected Validation Data



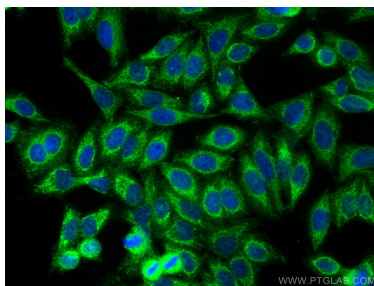
WB result of BCAT1/ECA39 antibody (13640-1-AP; 1:4000; incubated at room temperature for 1.5 hours) with sh-Control and sh-BCAT1/ECA39 transfected HeLa cells.



Various lysates were subjected to SDS PAGE followed by western blot with 13640-1-AP (BCAT1/ECA39 antibody) at dilution of 1:2000 incubated at room temperature for 1.5 hours.



Immunohistochemical analysis of paraffin-embedded mouse brain tissue slide using 13640-1-AP (BCAT1/ECA39 antibody) at dilution of 1:200 (under 10x lens). Heat mediated antigen retrieval with Tris-EDTA buffer (pH 9.0).



Immunofluorescent analysis of (-20°C Ethanol) fixed HepG2 cells using BCAT1 antibody (13640-1-AP) at dilution of 1:400 and CoraLite®488-Conjugated AffiniPure Goat Anti-Rabbit IgG(H+L) (SA00013-2).