

For Research Use Only

SLC12A1/NKCC2 Polyclonal antibody

Catalog Number: 13636-1-AP



Basic Information

Catalog Number:

13636-1-AP

Concentration:

240 ug/ml

Source:

Rabbit

Isotype:

IgG

Immunogen Catalog Number:

AG4564

GenBank Accession Number:

BC040138

GeneID (NCBI):

6557

UNIPROT ID:

Q13621

Full Name:

solute carrier family 12
(sodium/potassium/chloride
transporters), member 1

Calculated MW:

121 kDa

Observed MW:

140-180 kDa

Purification Method:

Antigen affinity purification

Recommended Dilutions:

WB: 1:5000-1:50000

Applications

Tested Applications:

WB, ELISA

Species Specificity:

mouse

Positive Controls:

WB : mouse kidney tissue,

Background Information

Storage

Storage:

Store at -20°C. Stable for one year after shipment.

Storage Buffer:

PBS with 0.02% sodium azide and 50% glycerol, pH7.3

Aliquoting is unnecessary for -20°C storage

For technical support and original validation data for this product please contact:

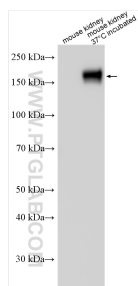
T: 4006900926

E: Proteintech-CN@ptglab.com

W: ptgcn.com

This product is exclusively available under Proteintech Group brand and is not available to purchase from any other manufacturer.

Selected Validation Data



Untreated and 37°C incubated mouse kidney tissue were subjected to SDS PAGE followed by western blot with 13636-1-AP (SLC12A1 antibody) at dilution of 1:10000 incubated at room temperature for 1.5 hours.