

For Research Use Only

POLI Polyclonal antibody

Catalog Number: 13635-1-AP

Featured Product

10 Publications



Basic Information

Catalog Number:

13635-1-AP

Size:

200 µg/ml

Source:

Rabbit

Isotype:

IgG

Immunogen Catalog Number:

AG4563

GenBank Accession Number:

BC032662

GeneID (NCBI):

11201

UNIPROT ID:

Q9UNA4

Full Name:

polymerase (DNA directed) iota

Calculated MW:

715 aa, 80 kDa

Observed MW:

87 kDa

Purification Method:

Antigen affinity purification

Recommended Dilutions:

WB 1:500-1:2000

IP 0.5-4.0 µg for 1.0-3.0 mg of total protein lysate

IHC 1:20-1:200

Applications

Tested Applications:

IHC, IP, WB, ELISA

Cited Applications:

WB, IF, IHC

Species Specificity:

human, mouse, rat

Cited Species:

human, mosquito, mouse

Note-IHC: suggested antigen retrieval with TE buffer pH 9.0; (*) Alternatively, antigen retrieval may be performed with citrate buffer pH 6.0

Positive Controls:

WB : mouse testis tissue, human heart tissue, rat testis tissue

IP : mouse testis tissue,

IHC : human pancreas cancer tissue,

Background Information

Mammalian Pol δ owns an unusual combination of properties: it is stimulated by Mn²⁺ ions, can bypass some DNA lesions and misincorporates "G" opposite template "T" more frequently than incorporates the correct "A." [PMID:21304950] It also was shown to possess dRP lyase activity. In addition, Pol δ is much more efficient in the presence of Mn²⁺ in comparison to Mg²⁺. [PMID:17609217]. It has been proposed that POLI involves in immunoglobulin somatic hypermutation (SHM), bypass of deaminated cytosines, several adducts of the purine bases. DNA strand crosslinks and is involved in DNA repair under oxidative stress[PMID:15199127].

Notable Publications

Author	Pubmed ID	Journal	Application
Chao He	28905458	Cancer Sci	WB,IHC
Zhenzi Su	34354953	Front Oncol	WB
M Iguchi	23955086	Oncogene	WB

Storage

Storage:

Store at -20°C. Stable for one year after shipment.

Storage Buffer:

PBS with 0.02% sodium azide and 50% glycerol pH 7.3.

Aliquoting is unnecessary for -20°C storage

For technical support and original validation data for this product please contact:

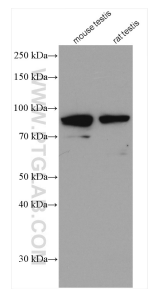
T: 4006900926

E: Proteintech-CN@ptglab.com

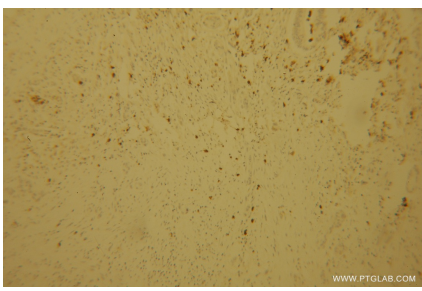
W: ptgcn.com

This product is exclusively available under Proteintech Group brand and is not available to purchase from any other manufacturer.

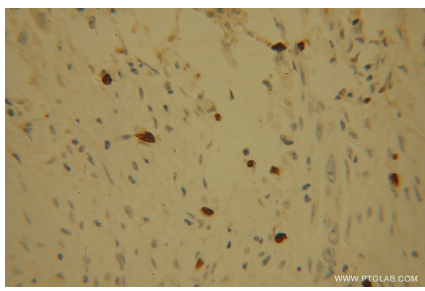
Selected Validation Data



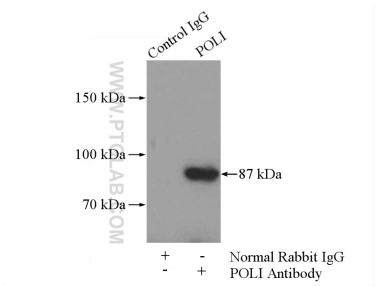
Various lysates were subjected to SDS PAGE followed by western blot with 13635-1-AP (POLI antibody) at dilution of 1:1000 incubated at room temperature for 1.5 hours.



Immunohistochemical analysis of paraffin-embedded human pancreas cancer using 13635-1-AP (POLI antibody) at dilution of 1:100 (under 10x lens).



Immunohistochemical analysis of paraffin-embedded human pancreas cancer using 13635-1-AP (POLI antibody) at dilution of 1:100 (under 40x lens).



IP result of anti-POLI (IP:13635-1-AP, 4ug; Detection:13635-1-AP 1:1000) with mouse testis tissue lysate 4000ug.