

For Research Use Only

# CREB3L4 Polyclonal antibody

Catalog Number: 13630-1-AP



## Basic Information

Catalog Number:

13630-1-AP

Size:

550 µg/ml

Source:

Rabbit

Isotype:

IgG

Immunogen Catalog Number:

AG4548

GenBank Accession Number:

BC038962

GeneID (NCBI):

148327

UNIPROT ID:

Q8TEY5

Full Name:

cAMP responsive element binding protein 3-like 4

Calculated MW:

395 aa, 43 kDa

Observed MW:

43 kDa

Purification Method:

Antigen affinity purification

Recommended Dilutions:

WB 1:500-1:1000

IF 1:50-1:500

## Applications

Tested Applications:

IF/ICC, WB, ELISA

Species Specificity:

human

Positive Controls:

WB : HepG2 cells, HL-60 cells

IF : MCF-7 cells,

## Background Information

CREB3L4 (cAMP responsive element binding protein 3-like 4), also named as AIBZIP, CREB4 and ATCE1, is a member of the CREB/ATF transcription factor family. CREB3L4 may play a role in the unfolded protein response, characterized by their regulation of gene expression through the cAMP-responsive element (PMID: 22829733). CREB3L4 is highly expressed in multiple human cancers, such as human breast carcinoma, prostate cancer (PMID: 32026099, PMID: 28338058). The molecular weight of CREB3L4 is 43 kDa and 55 kDa precursor was reported. Due to glycosylation, CREB3L4 can be observed with molecular weights of 35 and 41 kDa (PMID: 25412305, 15938716).

## Storage

Storage:

Store at -20°C. Stable for one year after shipment.

Storage Buffer:

PBS with 0.02% sodium azide and 50% glycerol pH 7.3.

Aliquoting is unnecessary for -20°C storage

For technical support and original validation data for this product please contact:

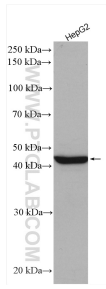
T: 4006900926

E: [Proteintech-CN@ptglab.com](mailto:Proteintech-CN@ptglab.com)

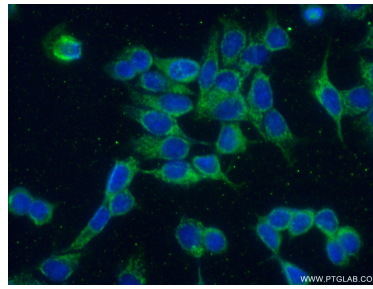
W: [ptgcn.com](http://ptgcn.com)

This product is exclusively available under Proteintech Group brand and is not available to purchase from any other manufacturer.

## Selected Validation Data



HepG2 cells were subjected to SDS PAGE followed by western blot with 13630-1-AP (CREB3L4 antibody) at dilution of 1:500 incubated at room temperature for 1.5 hours.



Immunofluorescent analysis of (-20°C Ethanol) fixed MCF-7 cells using 13630-1-AP (CREB3L4 antibody) at dilution of 1:50 and Alexa Fluor 488-conjugated AffiniPure Goat Anti-Rabbit IgG(H+L).