

# SUR2/ABCC9 Polyclonal antibody

Catalog Number: 13599-1-AP

## Basic Information

**Catalog Number:**

13599-1-AP

**Size:**

650 µg/ml

**Source:**

Rabbit

**Isotype:**

IgG

**Immunogen Catalog Number:**

AG4536

**GenBank Accession Number:**

BC033804

**GeneID (NCBI):**

10060

**UNIPROT ID:**

O60706

**Full Name:**

ATP-binding cassette, sub-family C (CFTR/MRP), member 9

**Calculated MW:**

1549 aa, 174 kDa

**Observed MW:**

174 kDa

**Purification Method:**

Antigen affinity purification

**Recommended Dilutions:**

WB 1:500-1:1000

## Applications

**Tested Applications:**

WB, ELISA

**Species Specificity:**

human, mouse

**Positive Controls:**

WB : mouse heart tissue, mouse skeletal muscle tissue, unboiled mouse heart tissue

## Background Information

ABCC9, also known as SUR2, belongs to the ABC transporter superfamily. ABCC9 is a subunit of ATP-sensitive potassium channels (KATP), forming cardiac and smooth muscle-type KATP channels with KCNJ11. KCNJ11 forms the channel pore while ABCC9 is required for activation and regulation (PMID: 9831708). ABCC9 is thought to form ATP-sensitive potassium channels in cardiac, skeletal, vascular, and non-vascular smooth muscle. Defects in ABCC9 cause dilated cardiomyopathy 10 and familial atrial fibrillation type 12 (ATFB12)(PMID: 15034580,17245405).

## Storage

**Storage:**

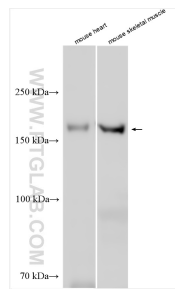
Store at -20°C. Stable for one year after shipment.

**Storage Buffer:**

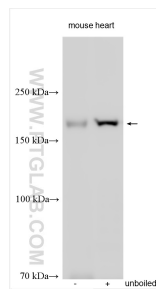
PBS with 0.02% sodium azide and 50% glycerol pH 7.3.

Aliquoting is unnecessary for -20°C storage

## Selected Validation Data



Various lysates were subjected to SDS PAGE followed by western blot with 13599-1-AP (SUR2/ABCC9 antibody) at dilution of 1:500 incubated at room temperature for 1.5 hours.



mouse heart were subjected to SDS PAGE followed by western blot with 13599-1-AP (SUR2/ABCC9 antibody) at dilution of 1:500 incubated at room temperature for 1.5 hours.