

For Research Use Only

# CLEC10A/CD301 Polyclonal antibody

Catalog Number: 13590-1-AP



## Basic Information

Catalog Number:

13590-1-AP

Size:

240 ug/ml

Source:

Rabbit

Isotype:

IgG

Immunogen Catalog Number:

AG4490

GenBank Accession Number:

BC039011

GeneID (NCBI):

10462

UNIPROT ID:

Q8IUN9

Full Name:

C-type lectin domain family 10, member A

Calculated MW:

316 aa, 35 kDa

Observed MW:

32 kDa, 28 kDa

Purification Method:

Antigen affinity purification

Recommended Dilutions:

WB 1:500-1:1000

## Applications

Tested Applications:

WB, ELISA

Species Specificity:

human

Positive Controls:

WB : BxPC-3 cells,

## Background Information

C-type lectin domain family 10 member A (CLEC10A), also known as CD301, macrophage galactose-type C-type lectin (MGL), DC-asialoglyco protein receptor (DC-ASGP-R) or human macrophage lectin (HML), is a type II transmembrane glycoprotein having a calcium-dependent carbohydrate recognition domain (PMID: 8598452; 11919201; 11698450). CLEC10A is expressed exclusively by myeloid professional antigen-presenting cells such as immature dendritic cells (DCs) and alternatively activated macrophages (PMID: 16998493). CLEC10A is a marker for human CD1c+ DCs (cDC2) (PMID: 29755453). It functions as an endocytic receptor for glycosylated antigens (PMID: 11919201).

## Storage

Storage:

Store at -20°C. Stable for one year after shipment.

Storage Buffer:

PBS with 0.02% sodium azide and 50% glycerol pH 7.3.

Aliquoting is unnecessary for -20°C storage

For technical support and original validation data for this product please contact:

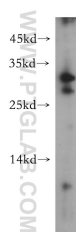
T: 4006900926

E: [Proteintech-CN@ptglab.com](mailto:Proteintech-CN@ptglab.com)

W: [ptgcn.com](http://ptgcn.com)

This product is exclusively available under Proteintech Group brand and is not available to purchase from any other manufacturer.

## Selected Validation Data



BxPC-3 cells were subjected to SDS PAGE followed by western blot with 13590-1-AP (CLEC10A/CD301 antibody) at dilution of 1:400 incubated at room temperature for 1.5 hours.