

For Research Use Only

STK24 Polyclonal antibody

Catalog Number: 13579-1-AP

Featured Product

3 Publications



Basic Information

Catalog Number:

13579-1-AP

Size:

700 µg/ml

Source:

Rabbit

Isotype:

IgG

Immunogen Catalog Number:

AG4483

GenBank Accession Number:

BC035578

GeneID (NCBI):

8428

UNIPROT ID:

Q9Y6E0

Full Name:

serine/threonine kinase 24 (STE20 homolog, yeast)

Calculated MW:

431 aa, 48 kDa

Observed MW:

50 kDa

Purification Method:

Antigen affinity purification

Recommended Dilutions:

WB 1:500-1:2000

Applications

Tested Applications:

WB, ELISA

Cited Applications:

WB

Species Specificity:

human

Cited Species:

human, rat

Positive Controls:

WB : HeLa cells,

Background Information

Serine/threonine-protein kinase 24 (STK24), also named MST3, belonging to GCK subfamily of STE20-like kinases, acts on both serine and threonine residues and promotes apoptosis in response to stress stimuli and caspase activation (PubMed: 10644707, PMID:12107159). STK24 and STK25 operate in the same cardiovascular development pathway with programmed cell death 10 (CCM3) (PMID: 20332113). It regulates axon outgrowth in forebrain neurons (PubMed: 17114295).

Notable Publications

Author	Pubmed ID	Journal	Application
Jiexian Du	35483194	Biomed Pharmacother	
Xinyi Qi	38685750	Phytother Res	WB
Yadong Li	37181807	Mediators Inflamm	WB

Storage

Storage:

Store at -20°C. Stable for one year after shipment.

Storage Buffer:

PBS with 0.02% sodium azide and 50% glycerol pH 7.3.

Aliquoting is unnecessary for -20°C storage

For technical support and original validation data for this product please contact:

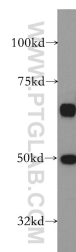
T: 4006900926

E: Proteintech-CN@ptglab.com

W: ptgcn.com

This product is exclusively available under Proteintech Group brand and is not available to purchase from any other manufacturer.

Selected Validation Data



HeLa cells were subjected to SDS PAGE followed by western blot with 13579-1-AP (STK24 antibody) at dilution of 1:400 incubated at room temperature for 1.5 hours.