

For Research Use Only

ARFGAP1 Polyclonal antibody

Catalog Number: 13571-1-AP

Featured Product

4 Publications



Basic Information

Catalog Number:

13571-1-AP

Size:

550 µg/ml

Source:

Rabbit

Isotype:

IgG

Immunogen Catalog Number:

AG4468

GenBank Accession Number:

BC028233

GeneID (NCBI):

55738

UNIPROT ID:

Q8N6T3

Full Name:

ADP-ribosylation factor GTPase activating protein 1

Calculated MW:

414 aa, 46 kDa

Observed MW:

46 kDa, 50 kDa

Purification Method:

Antigen affinity purification

Recommended Dilutions:

WB 1:500-1:2000

IP 0.5-4.0 µg for 1.0-3.0 mg of total protein lysate

IHC 1:20-1:200

IF/ICC 1:50-1:500

Applications

Tested Applications:

WB, IHC, IF/ICC, IP, ELISA

Cited Applications:

WB, IF

Species Specificity:

human, mouse, rat

Cited Species:

human, mouse, rat, pig

Note-IHC: suggested antigen retrieval with TE buffer pH 9.0; (*) Alternatively, antigen retrieval may be performed with citrate buffer pH 6.0

Positive Controls:

WB : PC-3 cells, HeLa cells, human brain tissue

IP : mouse testis tissue,

IHC : human prostate cancer tissue,

IF/ICC : HeLa cells,

Background Information

Protein coats deform flat lipid membranes into buds and capture membrane proteins to form transport vesicles. The assembly-disassembly cycle of the COPI coat on Golgi membranes is coupled to the GTP-GDP cycle of the small G protein ARF1. ARFGAP1 contributes to vesicle budding by increasing the GTPase activity of ARF1, because it promotes hydrolysis of the ARF1-bound GTP and thus, is required for the dissociation of coat proteins from Golgi-derived membranes and vesicles, a prerequisite for vesicle's fusion with target compartment. For ARFGAP1 may have a role in regulating the GTPase activity and neuronal toxicity of LRRK2; reciprocally, LRRK2 phosphorylates ArfGAP1 and is required for ArfGAP1 neuronal toxicity.

Notable Publications

Author	Pubmed ID	Journal	Application
Hsiang-Pu Feng	33715220	FASEB J	WB, IF
Liang Zhang	33721634	Vet Microbiol	WB
Klodjan Stafa	22363216	PLoS Genet	WB, IF

Storage

Storage:

Store at -20°C. Stable for one year after shipment.

Storage Buffer:

PBS with 0.02% sodium azide and 50% glycerol pH 7.3.

Aliquoting is unnecessary for -20°C storage

For technical support and original validation data for this product please contact:

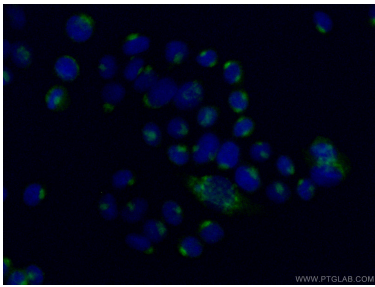
T: 4006900926

E: Proteintech-CN@ptglab.com

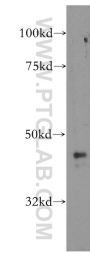
W: ptgcn.com

This product is exclusively available under Proteintech Group brand and is not available to purchase from any other manufacturer.

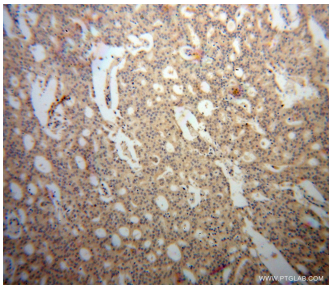
Selected Validation Data



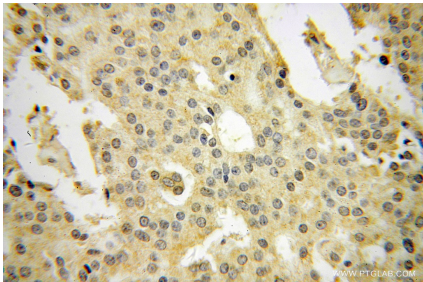
Immunofluorescent analysis of (4% PFA) fixed HeLa cells using 13571-1-AP (ARFGAP1 antibody) at dilution of 1:50 and CoraLite488-Conjugated AffiniPure Goat Anti-Rabbit IgG(H+L).



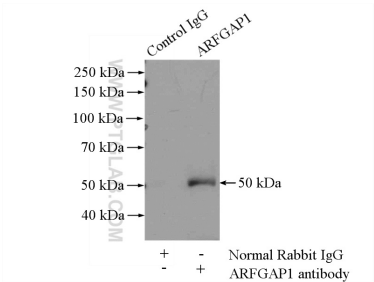
PC-3 cells were subjected to SDS PAGE followed by western blot with 13571-1-AP (ARFGAP1 antibody) at dilution of 1:400 incubated at room temperature for 1.5 hours.



Immunohistochemical analysis of paraffin-embedded human prostate cancer using 13571-1-AP (ARFGAP1 antibody) at dilution of 1:100 (under 10x lens).



Immunohistochemical analysis of paraffin-embedded human prostate cancer using 13571-1-AP (ARFGAP1 antibody) at dilution of 1:100 (under 40x lens).



IP result of anti-ARFGAP1 (IP:13571-1-AP, 4ug; Detection:13571-1-AP 1:500) with mouse testis tissue lysate 4000ug.