

For Research Use Only

BST2 Polyclonal antibody, PBS Only

Catalog Number: 13560-1-PBS

Featured Product



Basic Information

Catalog Number:

13560-1-PBS

Size:

1 mg/ml

Source:

Rabbit

Isotype:

IgG

Immunogen Catalog Number:

AG4430

GenBank Accession Number:

BC033873

GeneID (NCBI):

684

UNIPROT ID:

Q10589

Full Name:

bone marrow stromal cell antigen 2

Calculated MW:

180 aa, 20 kDa

Observed MW:

30-36 kDa, 50-70 kDa

Purification Method:

Antigen affinity purification

Applications

Tested Applications:

WB, IHC, IF/ICC, Indirect ELISA

Species Specificity:

human

Background Information

BST2, also named as CD317 and Tetherin, belongs to the tetherin family. It may be involved in the sorting of secreted proteins and it is involved in pre-B-cell growth. BST2 is an antiretroviral defense protein, that blocks retrovirus release from the cell surface. Depleted upon HIV-1 infection by viral VPU protein through 20S proteasome degradation. Depleted upon infection by human Kaposi's sarcoma-associated herpesvirus (KSHV) through ubiquitination and subsequent degradation. BST2 may play a role in B-cell activation in rheumatoid arthritis. It is recently identified interferon-induced cellular proteins that restrict infections by retroviruses and flaviviruses and of influenza virus and flaviviruses, respectively. BST2 is a plasma membrane protein, tetherin inhibits virion particle release from infected cells. BST2 is effective against retroviruses and flavoviruses whilst IFITMs disrupt influenza and flavivirus infection. Observed MW of BST2 are 30-36 kDa (monomer form) and 50-70 kDa (dimer form) (PMID: 19196977; 21237475; 19737401; 37922253).

Storage

Storage:

Store at -80°C.

The product is shipped with ice packs. Upon receipt, store it immediately at -80°C

Storage Buffer:

PBS Only

For technical support and original validation data for this product please contact:

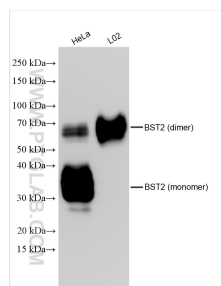
T: 4006900926

E: Proteintech-CN@ptglab.com

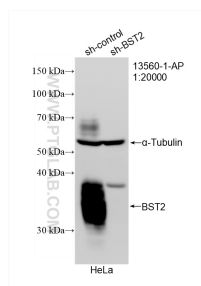
W: ptgcn.com

This product is exclusively available under Proteintech Group brand and is not available to purchase from any other manufacturer.

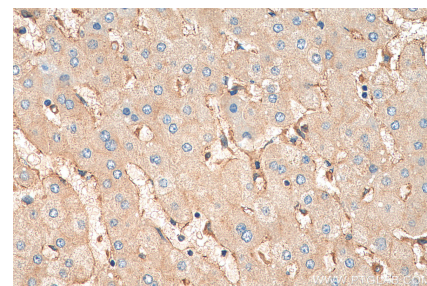
Selected Validation Data



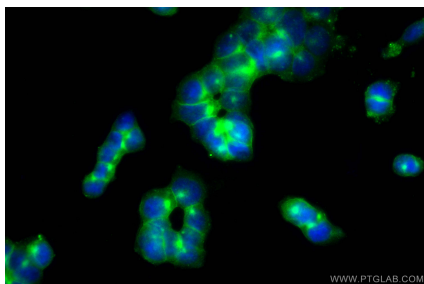
Various lysates were subjected to SDS PAGE followed by western blot with 13560-1-AP (BST2 antibody) at dilution of 1:8000 incubated at room temperature for 1.5 hours. This data was developed using the same antibody clone with 13560-1-PBS in a different storage buffer formulation.



WB result of BST2 antibody (13560-1-AP; 1:20000; incubated at room temperature for 1.5 hours) with sh-Control and sh-BST2 transfected HeLa cells. This data was developed using the same antibody clone with 13560-1-PBS in a different storage buffer formulation.



Immunohistochemical analysis of paraffin-embedded human liver tissue slide using 13560-1-AP (BST2 antibody) at dilution of 1:200 (under 40x lens). Heat mediated antigen retrieval with Tris-EDTA buffer (pH 9.0). This data was developed using the same antibody clone with 13560-1-PBS in a different storage buffer formulation.



Immunofluorescent analysis of (-20°C Ethanol) fixed NCCIT cells using BST2 antibody (13560-1-AP) at dilution of 1:200 and CoraLite®488-Conjugated AffiniPure Goat Anti-Rabbit IgG(H+L). This data was developed using the same antibody clone with 13560-1-PBS in a different storage buffer formulation.