

For Research Use Only

APC2 Polyclonal antibody

Catalog Number: 13559-1-AP

Featured Product

3 Publications



Basic Information

Catalog Number:

13559-1-AP

Size:

500 µg/ml

Source:

Rabbit

Isotype:

IgG

Immunogen Catalog Number:

AG4427

GenBank Accession Number:

BC032503

GeneID (NCBI):

29882

UNIPROT ID:

Q9UJX6

Full Name:

anaphase promoting complex subunit 2

Calculated MW:

822 aa, 94 kDa

Observed MW:

97 kDa

Purification Method:

Antigen affinity purification

Recommended Dilutions:

WB 1:500-1:3000

IP 0.5-4.0 µg for 1.0-3.0 mg of total protein lysate

IHC 1:200-1:800

IF 1:50-1:500

Applications

Tested Applications:

IF/ICC, IHC, IP, WB, ELISA

Cited Applications:

WB, IF

Species Specificity:

human, mouse, rat

Cited Species:

human, mouse

Note-IHC: suggested antigen retrieval with TE buffer pH 9.0; (*) Alternatively, antigen retrieval may be performed with citrate buffer pH 6.0

Positive Controls:

WB : HeLa cells, Jurkat cells, MCF-7 cells

IP : MCF-7 cells,

IHC : human breast cancer tissue,

IF : MCF-7 cells,

Background Information

Notable Publications

Author	Pubmed ID	Journal	Application
Aizhong Chen	32687671	FASEB J	WB,IF
Zhe Hao	37002708	FEBS J	WB
Cheng-Jie Zhou	36513638	Nat Commun	IF

Storage

Storage:

Store at -20°C. Stable for one year after shipment.

Storage Buffer:

PBS with 0.02% sodium azide and 50% glycerol pH 7.3.

Aliquoting is unnecessary for -20°C storage

For technical support and original validation data for this product please contact:

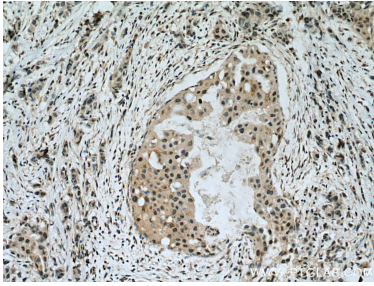
T: 4006900926

E: Proteintech-CN@ptglab.com

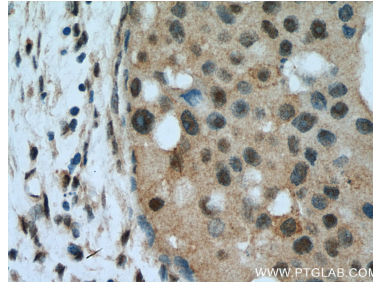
W: ptgcn.com

This product is exclusively available under Proteintech Group brand and is not available to purchase from any other manufacturer.

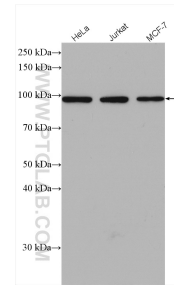
Selected Validation Data



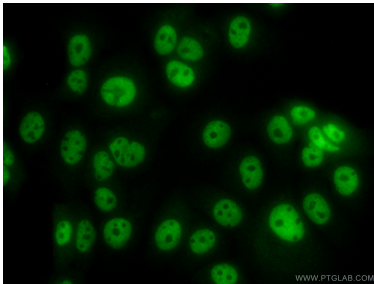
Immunohistochemical analysis of paraffin-embedded human breast cancer tissue slide using 13559-1-AP (APC2 antibody) at dilution of 1:400 (under 10x lens). Heat mediated antigen retrieval with Tris-EDTA buffer (pH 9.0).



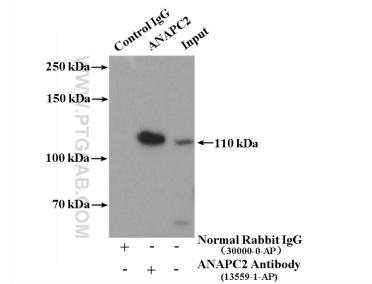
Immunohistochemical analysis of paraffin-embedded human breast cancer tissue slide using 13559-1-AP (APC2 antibody) at dilution of 1:400 (under 40x lens). Heat mediated antigen retrieval with Tris-EDTA buffer (pH 9.0).



Various lysates were subjected to SDS PAGE followed by western blot with 13559-1-AP (APC2 antibody) at dilution of 1:2000 incubated at room temperature for 1.5 hours.



Immunofluorescent analysis of (10% Formaldehyde) fixed MCF-7 cells using 13559-1-AP (APC2 antibody) at dilution of 1:50 and Alexa Fluor 488-conjugated AffiniPure Goat Anti-Rabbit IgG(H+L).



IP result of anti-APC2 (IP:13559-1-AP, 4ug; Detection:13559-1-AP 1:300) with MCF-7 cells lysate 3200ug.