

For Research Use Only

# SFI1 Polyclonal antibody

Catalog Number: 13550-1-AP

Featured Product

8 Publications



## Basic Information

### Catalog Number:

13550-1-AP

### Size:

500 µg/ml

### Source:

Rabbit

### Isotype:

IgG

### Immunogen Catalog Number:

AG4268

### GenBank Accession Number:

BC033613

### GeneID (NCBI):

9814

### UNIPROT ID:

A8K8P3

### Full Name:

Sfi1 homolog, spindle assembly associated (yeast)

### Calculated MW:

1211 aa, 134 kDa

### Observed MW:

148 kDa

### Purification Method:

Antigen affinity purification

### Recommended Dilutions:

WB 1:200-1:1000

IF/ICC 1:10-1:100

## Applications

### Tested Applications:

WB, IF/ICC, ELISA

### Cited Applications:

WB, IF, CoIP

### Species Specificity:

human, mouse

### Cited Species:

human, mouse

### Positive Controls:

WB : A549 cells, HepG2 cells, mouse lung tissue

IF/ICC : HepG2 cells, HeLa cells

## Background Information

## Notable Publications

Author	Pubmed ID	Journal	Application
Marine H Laporte	36125182	EMBO J	IF
Ebtissal M Khouj	31492759	J Cell Sci	WB
Isha Nasa	29764992	Sci Signal	WB

## Storage

### Storage:

Store at -20°C. Stable for one year after shipment.

### Storage Buffer:

PBS with 0.02% sodium azide and 50% glycerol pH 7.3.

Aliquoting is unnecessary for -20°C storage

For technical support and original validation data for this product please contact:

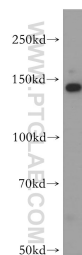
T: 4006900926

E: [Proteintech-CN@ptglab.com](mailto:Proteintech-CN@ptglab.com)

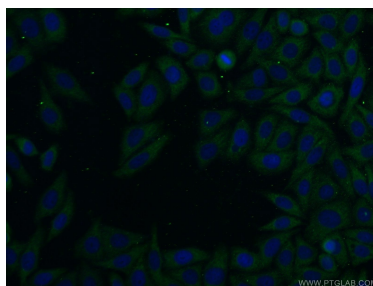
W: [ptgcn.com](http://ptgcn.com)

This product is exclusively available under Proteintech Group brand and is not available to purchase from any other manufacturer.

## Selected Validation Data



A549 cells were subjected to SDS PAGE followed by western blot with 13550-1-AP (SFI1 antibody) at dilution of 1:400 incubated at room temperature for 1.5 hours.



Immunofluorescent analysis of HepG2 cells using 13550-1-AP (SFI1 antibody) at dilution of 1:25 and Alexa Fluor 488-conjugated Goat Anti-Rabbit IgG(H+L).