

For Research Use Only

# MSY2 Polyclonal antibody

Catalog Number: 13538-1-AP **3 Publications**



## Basic Information

**Catalog Number:**

13538-1-AP

**Size:**

350 µg/ml

**Source:**

Rabbit

**Isotype:**

IgG

**Immunogen Catalog Number:**

AG4465

**GenBank Accession Number:**

BC033800

**GeneID (NCBI):**

51087

**UNIPROT ID:**

Q9Y2T7

**Full Name:**

Y box binding protein 2

**Calculated MW:**

364 aa, 39 kDa

**Observed MW:**

48 kDa

**Purification Method:**

Antigen affinity purification

**Recommended Dilutions:**

WB 1:1000-1:4000

IP 0.5-4.0 µg for 1.0-3.0 mg of total protein lysate

IHC 1:20-1:200

## Applications

**Tested Applications:**

IHC, IP, WB, ELISA

**Cited Applications:**

chIP, IF, IHC, IP, WB

**Species Specificity:**

human, mouse, rat

**Cited Species:**

mouse

**Note-IHC: suggested antigen retrieval with TE buffer pH 9.0; (\*) Alternatively, antigen retrieval may be performed with citrate buffer pH 6.0**

**Positive Controls:**

**WB:** HeLa cells, human stomach tissue, human testis tissue, HepG2 cells

**IP:** PC-3 cells,

**IHC:** human ovary tumor tissue,

## Background Information

MSY2, also named as CSDA3 and YBX2, belongs to the Y box family of cold shock domain proteins. MSY2 is solely expressed in male and female germ cells and necessary for fertility. MSY2 serves as a coactivator of transcription, binding to the DNA sequence CTGATTGGC/TC/TAA in the promoters of genes transcribed in germ cells, thereby linking transcription with mRNA storage/stabilization (PMID: 19597149). MSY2 has 1 isoform with the molecular mass of 38 kDa. MSY2 is essential for regulating mRNA stability in oocytes (PMID: 21613634).

## Notable Publications

Author	Pubmed ID	Journal	Application
Xiaoli Wang	33674260	Development	WB,IF,IP
	34437685	Development	WB,IF,IP
Yu-Hsiang Chou	32749240	J Clin Invest	WB,IHC,chIP

## Storage

**Storage:**

Store at -20°C. Stable for one year after shipment.

**Storage Buffer:**

PBS with 0.02% sodium azide and 50% glycerol pH 7.3.

Aliquoting is unnecessary for -20°C storage

For technical support and original validation data for this product please contact:

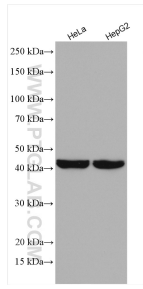
T: 4006900926

E: Proteintech-CN@ptglab.com

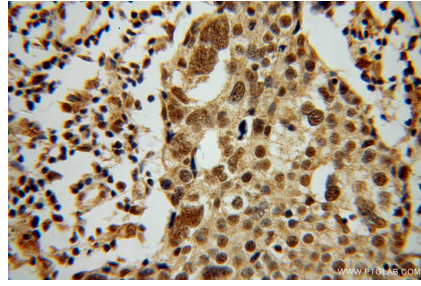
W: ptgcn.com

**This product is exclusively available under Proteintech Group brand and is not available to purchase from any other manufacturer.**

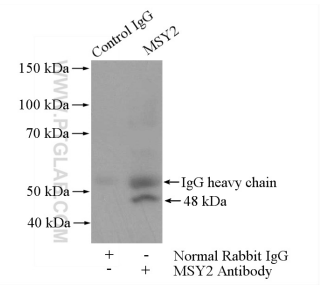
## Selected Validation Data



Various lysates were subjected to SDS PAGE followed by western blot with 13538-1-AP (MSY2 antibody) at dilution of 1:2000 incubated at room temperature for 1.5 hours.



Immunohistochemical analysis of paraffin-embedded human ovary tumor using 13538-1-AP (MSY2 antibody) at dilution of 1:50 (under 40x lens).



IP result of anti-MSY2 (IP:13538-1-AP, 4ug; Detection:13538-1-AP 1:300) with PC-3 cells lysate 1720ug.