

ACTL7B Polyclonal antibody

Catalog Number: 13537-1-AP

2 Publications

Basic Information

Catalog Number:

13537-1-AP

Size:

300 µg/ml

Source:

Rabbit

Isotype:

IgG

Immunogen Catalog Number:

AG4460

GenBank Accession Number:

BC033789

GeneID (NCBI):

10880

UNIPROT ID:

Q9Y614

Full Name:

actin-like 7B

Calculated MW:

415 aa, 45 kDa

Observed MW:

45 kDa

Purification Method:

Antigen affinity purification

Recommended Dilutions:

WB 1:500-1:3000

IHC 1:20-1:200

Applications

Tested Applications:

IHC, WB, ELISA

Cited Applications:

WB

Species Specificity:

human, mouse, rat

Cited Species:

human, mouse

Note-IHC: suggested antigen retrieval with TE buffer pH 9.0; (*) Alternatively, antigen retrieval may be performed with citrate buffer pH 6.0

Positive Controls:

WB : human testis tissue, human liver tissue, mouse testis tissue

IHC : human prostate cancer tissue,

Background Information

ACTL7B is also named as actin-like-7-beta. The protein encoded by this gene is a member of a family of actin-related proteins (ARPs) which share significant amino acid sequence identity to conventional actins. The ARPs are involved in diverse cellular processes, including vesicular transport, spindle orientation, nuclear migration and chromatin remodeling. The ACTL7B gene is expressed predominantly in the testis, however, its exact function is not known. Diseases associated with ACTL7B include Dysautonomia and Hypertensive Nephropathy. An important paralog of this gene is ACTL7A. ACTL7B can be detected as 45 kDa.

Notable Publications

Author	Pubmed ID	Journal	Application
Gina E Merges	37800308	Development	WB
Brian P Hermann	30404016	Cell Rep	

Storage

Storage:

Store at -20°C. Stable for one year after shipment.

Storage Buffer:

PBS with 0.02% sodium azide and 50% glycerol pH 7.3.

Aliquoting is unnecessary for -20°C storage

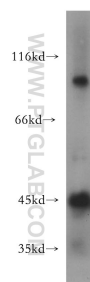
For technical support and original validation data for this product please contact:

T: 4006900926

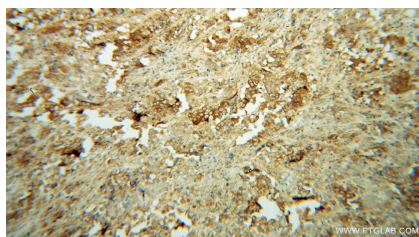
E: Proteintech-CN@ptglab.comW: ptgcn.com

This product is exclusively available under Proteintech Group brand and is not available to purchase from any other manufacturer.

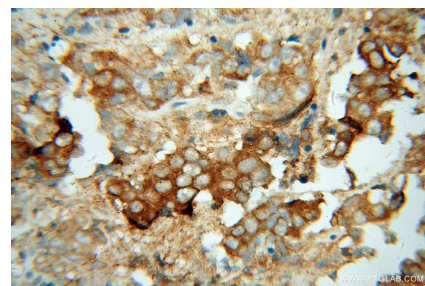
Selected Validation Data



human testis tissue were subjected to SDS PAGE followed by western blot with 13537-1-AP (ACTL7B antibody) at dilution of 1:300 incubated at room temperature for 1.5 hours.



Immunohistochemical analysis of paraffin-embedded human prostate cancer using 13537-1-AP (ACTL7B antibody) at dilution of 1:100 (under 10x lens).



Immunohistochemical analysis of paraffin-embedded human prostate cancer using 13537-1-AP (ACTL7B antibody) at dilution of 1:100 (under 40x lens).