

Proenkephalin-A Polyclonal antibody

Catalog Number: 13531-1-AP

Basic Information

Catalog Number:

13531-1-AP

Size:

400 µg/ml

Source:

Rabbit

Isotype:

IgG

Immunogen Catalog Number:

AG4428

GenBank Accession Number:

BC032505

GeneID (NCBI):

5179

UNIPROT ID:

P01210

Full Name:

proenkephalin

Calculated MW:

267 aa, 31 kDa

Purification Method:

Antigen affinity purification

Recommended Dilutions:

IHC 1:50-1:500

Applications

Tested Applications:

IHC, ELISA

Species Specificity:

human

Positive Controls:

IHC : human testis tissue,

Note-IHC: suggested antigen retrieval with TE buffer pH 9.0; (*) Alternatively, antigen retrieval may be performed with citrate buffer pH 6.0

Background Information

Proenkephalin-A (PENK) is also named as Synenkephalin, Met-enkephalin and Opioid growth factor (OGF), and belongs to the opioid neuropeptide precursor family. PENK is a neuropeptide that competes with and mimics the effects of opiate drugs. They play a role in a number of physiologic functions, including pain perception and responses to stress (PMID:7057924). PENK hypermethylation is also associated with bladder cancer, hepatocellular carcinoma, colorectal cancer, and prostate cancer (PMID:36403035).

Storage

Storage:

Store at -20°C. Stable for one year after shipment.

Storage Buffer:

PBS with 0.02% sodium azide and 50% glycerol pH 7.3.

Aliquoting is unnecessary for -20°C storage

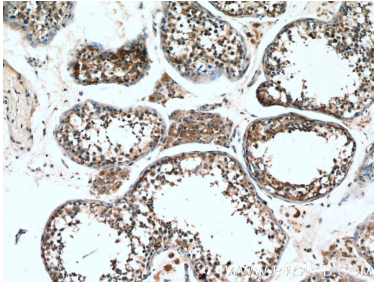
For technical support and original validation data for this product please contact:

T: 4006900926

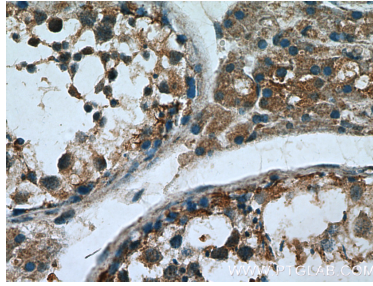
E: Proteintech-CN@ptglab.comW: ptgcn.com

This product is exclusively available under Proteintech Group brand and is not available to purchase from any other manufacturer.

Selected Validation Data



Immunohistochemical analysis of paraffin-embedded human testis tissue slide using 13531-1-AP (Proenkephalin-A antibody at dilution of 1:200 (under 10x lens).



Immunohistochemical analysis of paraffin-embedded human testis tissue slide using 13531-1-AP (Proenkephalin-A antibody at dilution of 1:200 (under 40x lens).