

For Research Use Only

# Nidogen 2 Polyclonal antibody

Catalog Number: 13530-1-AP

4 Publications



## Basic Information

### Catalog Number:

13530-1-AP

### Size:

300 µg/ml

### Source:

Rabbit

### Isotype:

IgG

### Immunogen Catalog Number:

AG4424

### GenBank Accession Number:

BC035608

### GeneID (NCBI):

22795

### UNIPROT ID:

Q14112

### Full Name:

nidogen 2 (osteonidogen)

### Calculated MW:

1375 aa, 151 kDa

### Observed MW:

200 kDa

### Purification Method:

Antigen affinity purification

### Recommended Dilutions:

WB 1:500-1:2000

IHC 1:20-1:200

## Applications

### Tested Applications:

WB, IHC, ELISA

### Cited Applications:

WB, IHC, IF

### Species Specificity:

human, mouse, rat

### Cited Species:

human, mouse

**Note-IHC: suggested antigen retrieval with TE buffer pH 9.0; (\*) Alternatively, antigen retrieval may be performed with citrate buffer pH 6.0**

### Positive Controls:

**WB** : mouse heart tissue, human heart tissue, human placenta tissue, mouse skeletal muscle tissue

**IHC** : human kidney tissue, mouse skeletal muscle tissue, mouse kidney tissue

## Background Information

Nidogen, also referred to as entactin, represents a highly conserved protein in vertebrates and invertebrates and is found in almost all basement membranes (BM). Nidogen-1 (150 kDa) and nidogen-2 (200 kDa) are elongated molecules composed of three globular domains (G1, G2, and G3) connected by a flexible, protease-sensitive link and a rigid rod-like domain. Western blot analysis of protein extracts of heart, lung, and skeletal muscle of mice, major bands of about 200 kDa were detected, accompanied by smaller and variable bands of 160-170 kDa. (PMID: 12215539)

## Notable Publications

| Author          | Pubmed ID | Journal             | Application |
|-----------------|-----------|---------------------|-------------|
| Mansheng Li     | 34901026  | Front Cell Dev Biol | IHC         |
| Ishita Kathuria | 39684493  | Int J Mol Sci       | WB          |
| Jeongmin Lee    | 39257771  | bioRxiv             | WB          |

## Storage

### Storage:

Store at -20°C. Stable for one year after shipment.

### Storage Buffer:

PBS with 0.02% sodium azide and 50% glycerol pH 7.3.

Aliquoting is unnecessary for -20°C storage

For technical support and original validation data for this product please contact:

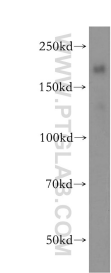
T: 4006900926

E: [Proteintech-CN@ptglab.com](mailto:Proteintech-CN@ptglab.com)

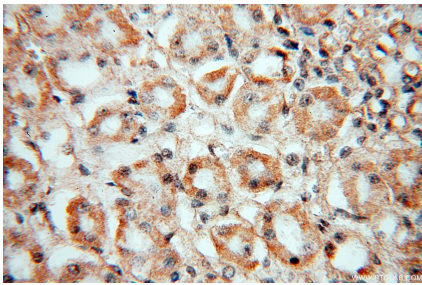
W: [ptgcn.com](http://ptgcn.com)

**This product is exclusively available under Proteintech Group brand and is not available to purchase from any other manufacturer.**

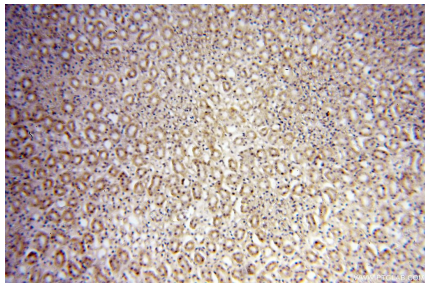
Selected Validation Data



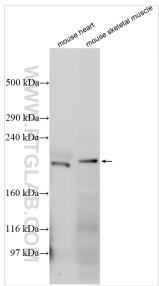
human placenta tissue were subjected to SDS PAGE followed by western blot with 13530-1-AP (Nidogen 2 antibody) at dilution of 1:400 incubated at room temperature for 1.5 hours.



Immunohistochemical analysis of paraffin-embedded human kidney using 13530-1-AP (Nidogen 2 antibody) at dilution of 1:50 (under 40x lens).



Immunohistochemical analysis of paraffin-embedded human kidney using 13530-1-AP (Nidogen 2 antibody) at dilution of 1:50 (under 10x lens).



Various lysates were subjected to SDS PAGE followed by western blot with 13530-1-AP (Nidogen 2 antibody) at dilution of 1:1000 incubated at room temperature for 1.5 hours.