

For Research Use Only

# EML2 Polyclonal antibody

Catalog Number: 13529-1-AP **2 Publications**



## Basic Information

**Catalog Number:**

13529-1-AP

**Size:**

300 µg/ml

**Source:**

Rabbit

**Isotype:**

IgG

**Immunogen Catalog Number:**

AG4423

**GenBank Accession Number:**

BC032630

**GeneID (NCBI):**

24139

**UNIPROT ID:**

O95834

**Full Name:**

echinoderm microtubule associated protein like 2

**Calculated MW:**

71 kDa

**Observed MW:**

71 kDa

**Purification Method:**

Antigen affinity purification

**Recommended Dilutions:**

WB 1:500-1:2000

IHC 1:20-1:200

## Applications

**Tested Applications:**

IHC, WB, ELISA

**Cited Applications:**

WB, IF

**Species Specificity:**

human, mouse

**Cited Species:**

human, mouse

**Note-IHC: suggested antigen retrieval with TE buffer pH 9.0; (\*) Alternatively, antigen retrieval may be performed with citrate buffer pH 6.0**

**Positive Controls:**

WB : mouse heart tissue, mouse stomach tissue

IHC : human prostate cancer tissue,

## Background Information

### Notable Publications

Author	Pubmed ID	Journal	Application
Sandeep Aryal	31797049	Hum Genet	IF
Takashi Hotta	35963242	Curr Biol	WB, IF

## Storage

**Storage:**

Store at -20°C. Stable for one year after shipment.

**Storage Buffer:**

PBS with 0.02% sodium azide and 50% glycerol pH 7.3.

Aliquoting is unnecessary for -20°C storage

For technical support and original validation data for this product please contact:

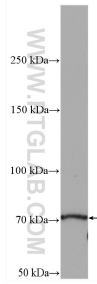
T: 4006900926

E: Proteintech-CN@ptglab.com

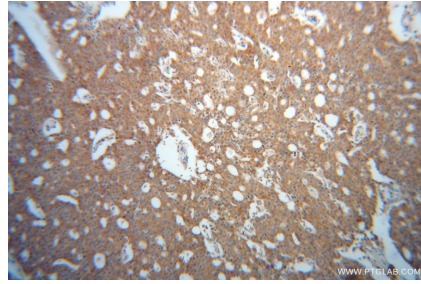
W: ptgcn.com

**This product is exclusively available under Proteintech Group brand and is not available to purchase from any other manufacturer.**

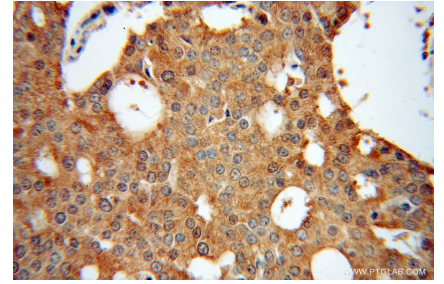
## Selected Validation Data



mouse heart tissue were subjected to SDS PAGE followed by western blot with 13529-1-AP (EML2 antibody) at dilution of 1:1000 incubated at room temperature for 1.5 hours.



Immunohistochemical analysis of paraffin-embedded human prostate cancer using 13529-1-AP (EML2 antibody) at dilution of 1:100 (under 10x lens).



Immunohistochemical analysis of paraffin-embedded human prostate cancer using 13529-1-AP (EML2 antibody) at dilution of 1:100 (under 40x lens).