

Glypican 2 Polyclonal antibody

Catalog Number: 13521-1-AP

Basic Information

Catalog Number:

13521-1-AP

Size:

900 µg/ml

Source:

Rabbit

Isotype:

IgG

Immunogen Catalog Number:

AG4041

GenBank Accession Number:

BC027972

GeneID (NCBI):

221914

UNIPROT ID:

Q8N158

Full Name:

glypican 2

Calculated MW:

579 aa, 63 kDa

Observed MW:

62-70-100 kDa

Purification Method:

Antigen affinity purification

Recommended Dilutions:

WB 1:500-1:3000

Applications

Tested Applications:

WB, ELISA

Species Specificity:

human, mouse

Positive Controls:

WB: SH-SY5Y cells, unboiled mouse brain tissue, unboiled rat brain tissue, T-47D cells, mouse spleen tissue, mouse testis tissue

Background Information

Glypican 2 (GPC2) is a heparan sulfate proteoglycan that is linked to the outer leaflet of the plasma membrane via a glycosylphosphatidylinositol (GPI) linkage (PMID: 18505598). It is expected to be located in cell membrane and highly overexpressed in a high percentage of human neuroblastomas, medulloblastomas, and retinoblastomas. The calculated molecular weight of GPC2 is 62 kDa. And other bands are the result of glycosylation modification. Recent studies demonstrate that expression of the GPC2 protein is significantly increased in neuroblastoma and undetectable in normal tissues, including brain, heart, lung, and kidney, indicating that GPC2 is a suitable tumor antigen in neuroblastoma (PMID: 30352677).

Storage

Storage:

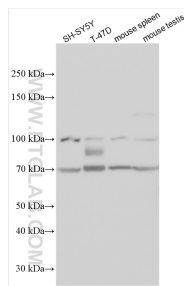
Store at -20°C. Stable for one year after shipment.

Storage Buffer:

PBS with 0.02% sodium azide and 50% glycerol pH 7.3.

Aliquoting is unnecessary for -20°C storage

Selected Validation Data



Various lysates were subjected to SDS PAGE followed by western blot with 13521-1-AP (Glypican 2 antibody) at dilution of 1:1500 incubated at room temperature for 1.5 hours.