

MARVELD2 Polyclonal antibody

Catalog Number: 13515-1-AP

5 Publications

Basic Information

Catalog Number:

13515-1-AP

Size:

1000 µg/ml

Source:

Rabbit

Isotype:

IgG

Immunogen Catalog Number:

AG4446

GenBank Accession Number:

BC033689

GeneID (NCBI):

153562

UNIPROT ID:

Q8N4S9

Full Name:

MARVEL domain containing 2

Calculated MW:

558 aa, 64 kDa

Observed MW:

64 kDa

Purification Method:

Antigen affinity purification

Recommended Dilutions:

WB 1:5000-1:50000

IHC 1:50-1:500

Applications

Tested Applications:

IHC, WB, ELISA

Cited Applications:

WB, IF, IHC

Species Specificity:

human, mouse, rat

Cited Species:

human, mouse, pig

Note-IHC: suggested antigen retrieval with TE buffer pH 9.0; (*) Alternatively, antigen retrieval may be performed with citrate buffer pH 6.0

Positive Controls:

WB : HEK-293 cells, HeLa cells, mouse kidney tissue, rat kidney tissue

IHC : human small intestine tissue, human stomach tissue

Background Information

MARVELD2, also named as Tricellulin or TRIC, is a 558 amino acid protein, which contains one MARVEL domain. MARVELD2 localizes the cell membrane and plays a role in the formation of the epithelial barriers. MARVELD2, is a first integral membrane protein that is concentrated at the vertically oriented tight junction strands of tricellular contacts. MARVELD2 may be a component to maintain the integrity for peripheral nervous system myelin function and morphology.

Notable Publications

Author	Pubmed ID	Journal	Application
David F. Russell	36395118	PLoS One	IF
David F Russell	35987072	Tissue Cell	IF
Zhe-Wei Zhang	35150869	Microb Pathog	WB, IHC

Storage

Storage:

Store at -20°C. Stable for one year after shipment.

Storage Buffer:

PBS with 0.02% sodium azide and 50% glycerol pH 7.3.

Aliquoting is unnecessary for -20°C storage

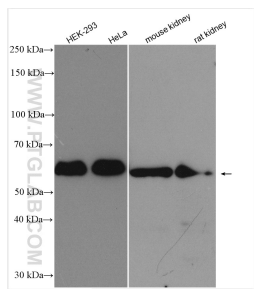
For technical support and original validation data for this product please contact:

T: 4006900926

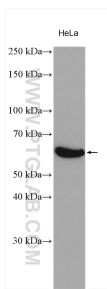
E: Proteintech-CN@ptglab.comW: ptgcn.com

This product is exclusively available under Proteintech Group brand and is not available to purchase from any other manufacturer.

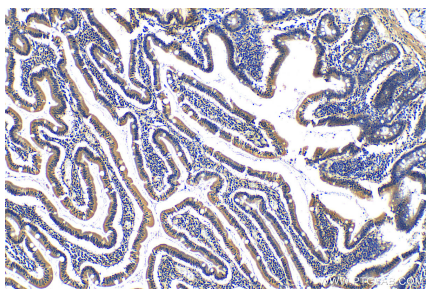
Selected Validation Data



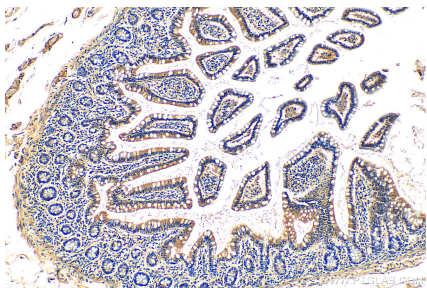
Various lysates were subjected to SDS PAGE followed by western blot with 13515-1-AP (MARVELD2 antibody) at dilution of 1:10000 incubated at room temperature for 1.5 hours.



Hela cell lysates were subjected to SDS PAGE followed by western blot with 13515-1-AP (MARVELD2 antibody) at dilution of 1:1000 incubated at room temperature for 1.5 hours.



Immunohistochemical analysis of paraffin-embedded human stomach tissue slide using 13515-1-AP (MARVELD2 antibody) at dilution of 1:200 (under 10x lens). Heat mediated antigen retrieval with Tris-EDTA buffer (pH 9.0).



Immunohistochemical analysis of paraffin-embedded human small intestine tissue slide using 13515-1-AP (MARVELD2 antibody) at dilution of 1:200 (under 10x lens). Heat mediated antigen retrieval with Tris-EDTA buffer (pH 9.0).