

For Research Use Only

eEF2K Polyclonal antibody

Catalog Number: 13510-1-AP

Featured Product

5 Publications



Basic Information

Catalog Number:

13510-1-AP

Size:

400 µg/ml

Source:

Rabbit

Isotype:

IgG

Immunogen Catalog Number:

AG4432

GenBank Accession Number:

BC032665

GeneID (NCBI):

29904

UNIPROT ID:

O00418

Full Name:

eukaryotic elongation factor-2 kinase

Calculated MW:

725 aa, 100 kDa

Observed MW:

100 kDa

Purification Method:

Antigen affinity purification

Recommended Dilutions:

WB 1:1000-1:4000

IP 0.5-4.0 µg for 1.0-3.0 mg of total protein lysate

IF/ICC 1:20-1:200

Applications

Tested Applications:

WB, IF/ICC, IP, ELISA

Cited Applications:

WB, IP, CoIP

Species Specificity:

human

Cited Species:

human, rat

Positive Controls:

WB : PC-3 cells, Jurkat cells, HEK-293 cells

IP : PC-3 cells,

IF/ICC : PC-3 cells,

Background Information

Notable Publications

Author	Pubmed ID	Journal	Application
Cheng Ji	29331413	Cancer Lett	WB
Julie Pires Da Silva	32059483	Cells	WB,IP,CoIP
Zuhal Hamurcu	30729279	J Mol Med (Berl)	

Storage

Storage:

Store at -20°C. Stable for one year after shipment.

Storage Buffer:

PBS with 0.02% sodium azide and 50% glycerol pH 7.3.

Aliquoting is unnecessary for -20°C storage

For technical support and original validation data for this product please contact:

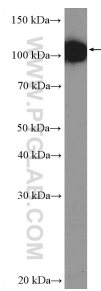
T: 4006900926

E: Proteintech-CN@ptglab.com

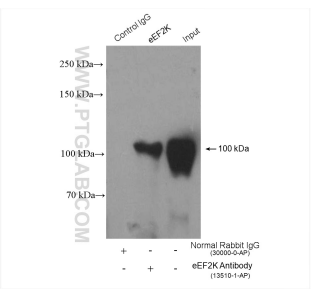
W: ptgcn.com

This product is exclusively available under Proteintech Group brand and is not available to purchase from any other manufacturer.

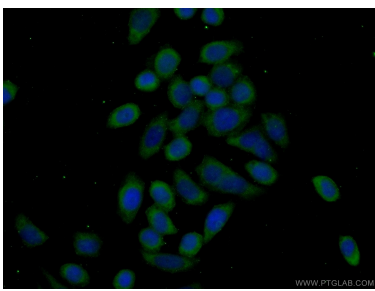
Selected Validation Data



PC-3 cells were subjected to SDS PAGE followed by western blot with 13510-1-AP (EEF2K Antibody) at dilution of 1:2000 incubated at room temperature for 1.5 hours.



IP result of anti-eEF2K (IP:13510-1-AP, 4ug; Detection:13510-1-AP 1:500) with PC-3 cells lysate 3200ug.



Immunofluorescent analysis of (-20°C Ethanol) fixed PC-3 cells using 13510-1-AP (EEF2K antibody) at dilution of 1:50 and Alexa Fluor 488-conjugated AffiniPure Goat Anti-Rabbit IgG(H+L).