

For Research Use Only

REX1 Polyclonal antibody

Catalog Number: 13503-1-AP



Basic Information

Catalog Number:

13503-1-AP

Size:

300 µg/ml

Source:

Rabbit

Isotype:

IgG

Immunogen Catalog Number:

AG4334

GenBank Accession Number:

BC032244

GeneID (NCBI):

57455

UNIPROT ID:

Q8N1G1

Full Name:

REX1, RNA exonuclease 1 homolog (S. cerevisiae)

Calculated MW:

1221 aa, 132 kDa

Observed MW:

132 kDa

Purification Method:

Antigen affinity purification

Recommended Dilutions:

IF/ICC 1:20-1:200

Applications

Tested Applications:

IF/ICC, ELISA

Species Specificity:

human

Positive Controls:

IF/ICC : human embryonic stem cells,

Background Information

REXO1, also named as EloA-BP1, ELOABP1, KIAA1138 and TCEB3BP1, is transcription elongation factor B polypeptide 3-binding protein 1. REXO1 did not affect either the rate of transcription elongation by RNA polymerase II or the transcriptional activity of TCEB3 in vitro. This gene is different to the REX1 which is an embryo stem cell marker.

Storage

Storage:

Store at -20°C. Stable for one year after shipment.

Storage Buffer:

PBS with 0.02% sodium azide and 50% glycerol pH 7.3.

Aliquoting is unnecessary for -20°C storage

For technical support and original validation data for this product please contact:

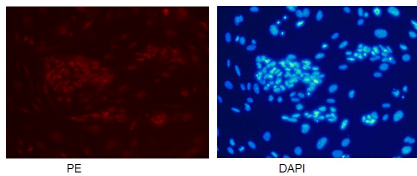
T: 4006900926

E: Proteintech-CN@ptglab.com

W: ptgcn.com

This product is exclusively available under Proteintech Group brand and is not available to purchase from any other manufacturer.

Selected Validation Data



PE DAPI
Confocal immunofluorescent analysis of human embryonic stem cells with 13503-1-AP at dilution of 1:50. The PE shows staining with 13503-1-AP/PE. The DAPI shows nuclear staining by DAPI. (20X)

Confocal immunofluorescent analysis of human embryonic stem cells with 13503-1-AP at dilution of 1:50. The PE shows staining with 13503-1-AP/PE. The DAPI shows nuclear staining by DAPI. (20X).