

For Research Use Only

USP46 Polyclonal antibody

Catalog Number: 13502-1-AP

Featured Product

8 Publications



Basic Information

Catalog Number:

13502-1-AP

Concentration:

650 ug/ml

Source:

Rabbit

Isotype:

IgG

Immunogen Catalog Number:

AG4330

GenBank Accession Number:

BC037574

GeneID (NCBI):

64854

UNIPROT ID:

P62068

Full Name:

ubiquitin specific peptidase 46

Calculated MW:

366 aa, 42 kDa

Observed MW:

38-42 kDa

Purification Method:

Antigen affinity purification

Recommended Dilutions:

WB 1:500-1:1000

IHC 1:50-1:500

Applications

Tested Applications:

WB, IHC, ELISA

Cited Applications:

WB, IHC, IF, IP, CoIP

Species Specificity:

human, mouse, rat

Cited Species:

human, mouse

Note-IHC: suggested antigen retrieval with TE buffer pH 9.0; (*) Alternatively, antigen retrieval may be performed with citrate buffer pH 6.0

Positive Controls:

WB : human kidney tissue, mouse pancreas tissue

IHC : human renal cell carcinoma tissue, human pancreas tissue

Background Information

Notable Publications

Author	Pubmed ID	Journal	Application
Zhongxia Yu	29138248	J Exp Med	WB
Longzhu Ke	36335636	Cell Biol Int	WB
Maoqing Tian	32707136	Exp Cell Res	WB,IHC,CoIP,IF

Storage

Storage:

Store at -20°C. Stable for one year after shipment.

Storage Buffer:

PBS with 0.02% sodium azide and 50% glycerol pH 7.3.

Aliquoting is unnecessary for -20°C storage

For technical support and original validation data for this product please contact:

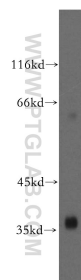
T: 4006900926

E: Proteintech-CN@ptglab.com

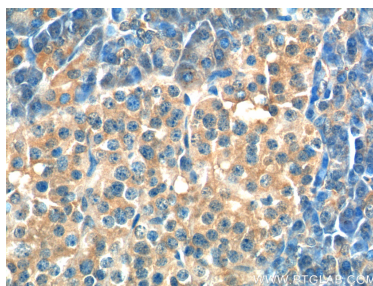
W: ptgcn.com

This product is exclusively available under Proteintech Group brand and is not available to purchase from any other manufacturer.

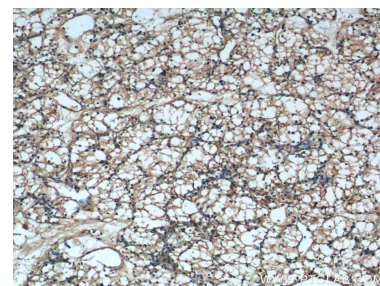
Selected Validation Data



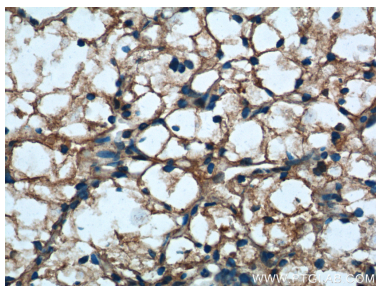
human kidney tissue were subjected to SDS PAGE followed by western blot with 13502-1-AP (USP46 antibody) at dilution of 1:500 incubated at room temperature for 1.5 hours.



Immunohistochemical analysis of paraffin-embedded human pancreas tissue slide using 13502-1-AP (USP46 Antibody) at dilution of 1:200 (under 40x lens).



Immunohistochemical analysis of paraffin-embedded human renal cell carcinoma tissue slide using 13502-1-AP (USP46 Antibody) at dilution of 1:200 (under 10x lens).



Immunohistochemical analysis of paraffin-embedded human renal cell carcinoma tissue slide using 13502-1-AP (USP46 Antibody) at dilution of 1:200 (under 40x lens).