

For Research Use Only

GP2 Polyclonal antibody, PBS Only

Catalog Number: 13493-1-PBS



Basic Information

Catalog Number:

13493-1-PBS

Source:

Rabbit

Isotype:

IgG

Immunogen Catalog Number:

AG4317

GenBank Accession Number:

BC032693

GeneID (NCBI):

2813

UNIPROT ID:

P55259

Full Name:

glycoprotein 2 (zymogen granule membrane)

Calculated MW:

530 aa, 58 kDa

Observed MW:

75-85 kDa

Purification Method:

Antigen affinity purification

Applications

Tested Applications:

WB, IHC, Indirect ELISA

Species Specificity:

human, mouse, rat

Background Information

Pancreatic secretory granule membrane major glycoprotein (GP2) is the most abundant membrane component of zymogen granules secreted by pancreatic acinar cells (PMID: 8190715). GP2 associates with the plasma membrane via glycosylphosphatidylinositol (GPI) linkage. It is released from the membrane of mature zymogen granules by an enzymatic mechanism (PMID: 2011597). GP2 plays a role in defense against adhesive and invasive commensal bacteria during intestinal inflammation (PMID: 33594081). GP2 is preferentially expressed in acinar cell carcinomas of the pancreas but the glycoprotein can rarely also be expressed in a variety of other tumor entities (PMID: 36137400). The apparent molecular weight of GP2 is 70-100 kDa, which is larger than the calculated molecular weight, due to glycosylation (PMID: 19627615; 30186250).

Storage

Storage:

Store at -80°C.

The product is shipped with ice packs. Upon receipt, store it immediately at -80°C

Storage Buffer:

PBS only, pH7.3

For technical support and original validation data for this product please contact:

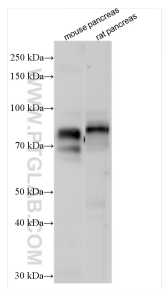
T: 4006900926

E: Proteintech-CN@ptglab.com

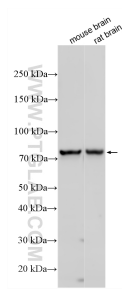
W: ptgcn.com

This product is exclusively available under Proteintech Group brand and is not available to purchase from any other manufacturer.

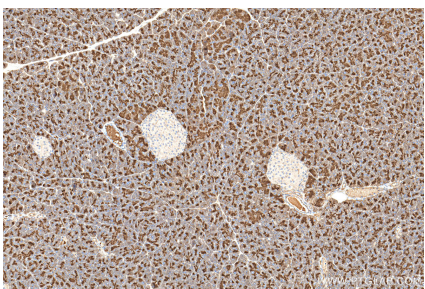
Selected Validation Data



Various lysates were subjected to SDS PAGE followed by western blot with 13493-1-AP (GP2 antibody) at dilution of 1:2000 incubated at room temperature for 1.5 hours. This data was developed using the same antibody clone with 13493-1-PBS in a different storage buffer formulation.



Various lysates were subjected to SDS PAGE followed by western blot with 13493-1-AP (GP2 antibody) at dilution of 1:5000 incubated at room temperature for 1.5 hours. This data was developed using the same antibody clone with 13493-1-PBS in a different storage buffer formulation.



Immunohistochemical analysis of paraffin-embedded mouse pancreas tissue slide using 13493-1-AP (GP2 antibody) at dilution of 1:400 (under 10x lens). Heat mediated antigen retrieval with Tris-EDTA buffer (pH 9.0). This data was developed using the same antibody clone with 13493-1-PBS in a different storage buffer formulation.