

GP2 Polyclonal antibody

Catalog Number: **13493-1-AP**

Basic Information

Catalog Number:

13493-1-AP

Size:

600 µg/ml

Source:

Rabbit

Isotype:

IgG

Immunogen Catalog Number:

AG4317

GenBank Accession Number:

BC032693

GeneID (NCBI):

2813

UNIPROT ID:

P55259

Full Name:

glycoprotein 2 (zymogen granule membrane)

Calculated MW:

530 aa, 58 kDa

Observed MW:

75-85 kDa

Purification Method:

Antigen affinity purification

Recommended Dilutions:

WB 1:1000-1:4000

Applications

Tested Applications:

WB, ELISA

Species Specificity:

human, mouse, rat

Positive Controls:

WB : rat pancreas tissue, mouse pancreas tissue

Background Information

Pancreatic secretory granule membrane major glycoprotein (GP2) is the most abundant membrane component of zymogen granules secreted by pancreatic acinar cells (PMID: 8190715). GP2 associates with the plasma membrane via glycosylphosphatidylinositol (GPI) linkage. It is released from the membrane of mature zymogen granules by an enzymatic mechanism (PMID: 2011597). GP2 plays a role in defense against adhesive and invasive commensal bacteria during intestinal inflammation (PMID: 33594081). GP2 is preferentially expressed in acinar cell carcinomas of the pancreas but the glycoprotein can rarely also be expressed in a variety of other tumor entities (PMID: 36137400). The apparent molecular weight of GP2 is 70-100 kDa, which is larger than the calculated molecular weight, due to glycosylation (PMID: 19627615; 30186250).

Storage

Storage:

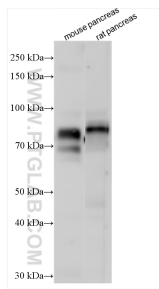
Store at -20°C. Stable for one year after shipment.

Storage Buffer:

PBS with 0.02% sodium azide and 50% glycerol pH 7.3.

Aliquoting is unnecessary for -20°C storage

Selected Validation Data



Various lysates were subjected to SDS PAGE followed by western blot with 13493-1-AP (GP2 antibody) at dilution of 1:2000 incubated at room temperature for 1.5 hours.